



النشرة الإحصائية Statistical Bulletin 2012

النشرة الإحصائية
دائرة الإحصاءات الحيوية والصحية

تلفون: 01-611390
وزارة الصحة العامة-مستشفى المتحف





النشرة الإحصائية Statistical Bulletin 2012

النشرة الإحصائية
دائرة الإحصاءات الحيوية والصحية

تلفون: 01-611390
وزارة الصحة العامة-مستديرة المتحف





الجمهورية اللبنانية
وزارة الصحة العامة

النشرة الإحصائية

Statistical Bulletin

2012

This is the 2012 issue of the Statistical Bulletin of the Ministry of Public Health (MOPH) in electronic form. The Statistical Bulletin of the MOPH is the annual statistical compilation of the available data at the Ministry which is growing year after year due to the increase in availability of the data in statistical form and the demand from the community to familiarize itself with the various activities of the MOPH, not to mention the dedication of concerned employees to keep the flow of information going.

Special thanks to Dr Salim Adib for technical editing.

Hilda Harb

Head of Statistics Department

Ministry of Public Health

Tel: 00961-1-611390

Hilda_harb@yahoo.com;

hharb@moph.gov.lb

Table of Contents

	Page
Foreword	
Table of Contents	4
A-Summary Tables	
Table A.1: Selected Indicators of Lebanon, 2010-2012	6
Table A.2: MOPH Itemized Budget for the Past Three Years (Thousands LBP)	7
B-Population Data	
Table B.1: Registered Births By Month and Qada, 2012	8
Table B.2: Registered Deaths By Month and Qada, 2012	9
Table B.3: Most Recent* Population Distribution** by Age Group and Gender Applied to 2012 Estimate	10
Table B.4: Resident Population* Distribution Age Group and Qada, 2012	11
Table B.5: Resident Population* Distribution by Mohafaza and Qada, 2008-2012	12
Table B.6: Resident Population* Distribution By Age Group, Qada, and Some Basic Indicators, 2012	13
C-MOPH In-Patient Services Utilization Data	
Graph C.1: Hospitals Contracting With The MOPH By Mohafaza and Type, 2012	14
Graph C.2: MOPH Subsidized Admissions by Type of Hospital and Location, 2012	15
Graph C.3: MOPH Subsidized In-patients by Qada of Origin and Type of Hospital, 2012	16
Graph C.4: MOPH Subsidized In-patients by Qada of Origin and Hospital Location, 2012	17
Graph C.5: The Evolution of MOPH Subsidized Admissions in Public and Private Hospitals Between 2005 and 2012	18
Graph C.6: Percent Population Hospitalized Among Eligible* Population by Qada, 2012	19
Table C.1: MOPH Subsidized Hospital Admissions By Categories of Diagnosis and Gender, 2012	20
Graph C.7: MOPH Subsidized Admissions By ICD10 Categories of Diagnosis, 2012 (N=267,568)	27
Graph C.8: MOPH Subsidized Admissions by Category of Diagnosis and Gender, 2012 (N=267,568)	28
Graph C.9: Hospitalized Morbidities Among Eligible* Population By Age Group and Gender, 2012	29
D-Epidemiology	
Graph D.1: Trend in MOPH Subsidized Hospitalized Cases of Neoplasms by Age Group, 2008-2012	30
Graph D.2: Trend in MOPH Subsidized Hospitalized <i>Male</i> Cases of Neoplasms By Age Group, 2008-2012	31
Graph D.3: Trend in MOPH Subsidized Hospitalized <i>Female</i> Cases of Neoplasms By Age Group, 2008- 2012	32
Graph D.4: MOPH Subsidized Hospitalized Cardiovascular* Cases by Gender and Age Group, 2012	33
Graph D.5: MOPH Subsidized Hospitalized Cardiovascular Cases By Gender and Qada, 2012	34
Graph D.6: Number of MOPH Subsidized Open Heart Surgeries By Category, 2012	35
Table D.1: HIV/AIDS Incidence in Lebanon, 2012	36
E-Vaccination	
Table E.1: National Immunization Coverage Rates for Polio by Qada*, 2012	37
F-Diseases' Surveillance Data	
Table F.1: Cases of Notifiable Diseases Reported to the MOPH Epidemiologic Surveillance Unit By Month, 2012	38
Table F.2: Cases of Notifiable Diseases Reported to the MOPH Epidemiologic Surveillance Unit by Age Groups and Gender, 2012	39
Table F.3: Cases of Notifiable Diseases Reported to the MOPH Epidemiologic Surveillance Unit by month, 2012	40
G-Maternal Neonatal Mortality Notification System (MNMNS)	
Table G.1: Maternal Neonatal Mortality Notification System (MNMNS) Statistics by Qada, 2012	41

Table of Contents

H-Medication for Chronic Illnesses Program: the YMCA Records	
Graph H.1: Cumulative Number of Beneficiaries of the MOPH Chronic Drugs Program* by Age and Gender, 2012	42
Graph H.2: Graph H.2: Cases of Chronic Conditions Receiving Treatment Through the MOPH Chronic Drugs Program*, 2008-2012	43
Graph H.3: Distribution of Chronic Conditions Among Users of Chronic Drugs *, 2012	44
Graph H.4: Socio-medical Centers and Beneficiaries per Center by Mohafaza, 2012*	45

Table A.1: Selected Indicators of Lebanon, 2010-2012

	Unit	2010	2011	2012
Demographic Indicators				
Population estimate*	1000 citizens	3,962	4,036	4,104
Births		91,795	97,887	90,167
Deaths		21,441	23,257	22,792
Crude Birth Rate	per 1000	23.2	24.3	22.2
Crude Death Rate	per 1000	5.4	5.8	5.6
Population Growth Rate		1.8	1.8	1.7
Population by Age				
	< 15 percent	24.6	24.6	24.6
	65+ percent	9.7	9.7	9.7
Dependency Ratio		0.52	0.52	0.52
Unemployment Ratio (for ages 15-64)				6.4 (2009)
Total Fertility Rate				1.9 (2004)
Annual Fertility Ratio	Births per 100 women 15-49			8
Budgetary Resources Indicators				
Total GPD	Billion Leb. Pounds	57,300	60,419	64,800
Allocated to MOPH from Total Gov Budget	percent	2.5	2.7	2.6
Annual Budget of MOPH	Billion Leb. Pounds	486.7	527.9	549.5
Annual Budget of MOPH per capita	\$US	82	87	89
National Health Expenditure per capita	\$US			751
National Health Expenditure as % GDP	percent			7.17
Manpower and Physical Resource Indicators				
	per 10,000 population			
Physicians		30.7	32	36.5
Dentists		14.3	14.7	12.7
Pharmacists		14.6	15.7	18.6
Nursing and Midwifery Personnel		23.3	27.2	29.1
Hospital Beds		34.5	34.5	28.55
Coverage with Primary Health Care Indicators				
Infants Fully Immunized-DPT	Percent Immunized	94	95	95
Infants Fully Immunized-OPV	Percent Immunized	94	96	96
Infants Fully Immunized-Measles	Percent Immunized	95	98	98
Infants Fully Immunized-Hepatitis B	Percent Immunized	94	95	95
Population with Access to Safe Drinking Water	percent			100 (2004)
Married Women Using Contraceptives	percent			54 (2009)
Health Status Indicators				
Infant Mortality Rate	per 1000 Live Births			9 (2009)
Less than five mortality rate	per 1000 Live Births			10(2009)
Maternal Mortality Ratio	per 100,000 Live Births		25	18
Selected Morbidity Indicators				
	Number of Notified Cases 2012			
Cholera		0	0	0
Polio		0	0	0
Measles		11	9	9
Diphtheria		0	0	0
Tetanus		2	2	2
Neonatal Tetanus		0	0	0
Malaria		66	83	122
HIV/AIDS		93	109	97
Sources of Information				
Maternal Neonatal Mortality Notification System, 2012				
Central Administration for Statistics (CAS)		PapFam 2004, MOSA/CAS		
Expanded Program on Immunization, MOPH		Economic Accounts of Lebanon 2011, 2012		
Estimated Population from the 2004 and 2007 Household surveys (CAS) in addition to Registered Births and Deaths at Dept of Statistics		MICS3, 2009. CAS/UNICEF.		
NHA 2012	National AIDS Program (NAP)	Syndicate Figures		
Epidemiological Surveillance Unit	Malaria Control Program, MOPH	Government Budget ارقام الموازنة العامة		

* Excluding Palestinian Camps and displaced Syrians.

Table A.2: MOPH Itemized Budget for the Past Three Years ('000 LBP)

موازنة وزارة الصحة العامة بحسب بنودها للثلاث سنوات الأخيرة (بالآلاف الليرات)

	2012	2011	2010	
Hospitalization in private sector	340,000,000	330,000,000	320,000,000	نفقات استشفاء في القطاع الخاص
Public Hopsitals	13,000,000	12,000,000	12,000,000	مستشفيات حكومية
Drugs	120,000,000	110,000,000	91,000,000	ادوية
Contributions to NGOs	13,317,770	12,817,770	12,817,770	مساهمات للقطاع غير الحكومي
Salaries and other employees' benefits	26,957,500	27,433,500	27,472,900	المخصصات والرواتب والأجور
Other Expenses	27,581,039	19,690,039	18,593,039	نفقات اخرى
Central Laboratory (Part One)	1,055,500	925,500	977,500	المختبر المركزي جزء اول
Part Two (Central Lab+MOPH)	7,568,000	15,007,000	3,797,000	الجزء الثاني (وزارة الصحة + المختبر المركزي)
Total MOPH Budget	549,479,809	527,873,809	486,658,209	مجموع موازنة وزارة الصحة العامة
Total Government Budget	21,355,000,000	19,773,000,000	19,537,600,000	مجموع الموازنة العامة
Government Debt	5,370,000,000	5,776,000,000	6,860,120,314	ديون متوجبة الأداء
Total Government Budget Excluding Debt	15,985,000,000	13,997,000,000	12,677,479,686	مجموع الموازنة العامة بدون الديون المتوجبة
MOPH Budget out of Total Government Budget (with debt)	2.57	2.67	2.49	نسبة موازنة وزارة الصحة الى الموازنة العامة/مع خدمة الدين
MOPH Budget out of Total Government Budget (without debt)	3.44	3.77	3.84	نسبة موازنة وزارة الصحة الى الموازنة العامة/ بدون خدمة الدين

Source: Government Budget 2010, 2011,2012

المصدر: مشروع قانون الموازنة العامة، 2010-2011-2012

Table B.1: Registered Births By Month and Qada, 2012

Qadaa	January	February	March	April	May	June	July	August	September	October	November	December	Total
Akkar	1090	847	1043	838	828	848	868	914	997	947	901	910	11031
Aley	158	152	152	164	174	179	212	220	191	180	189	126	2097
Baabda	148	151	152	146	139	178	177	182	118	157	175	148	1871
Baalback	852	818	825	528	443	436	66	581	407	334	146	0	5436
Batroun	67	104	82	85	84	90	66	71	88	124	106	58	1025
Bcharri	131	90	117	154	155	84	61	68	63	145	98	96	1262
West Bekaa	192	154	192	190	177	247	255	230	199	213	242	216	2507
Bint Jbeil	283	260	387	292	327	399	364	340	411	338	331	348	4080
Chouf	313	284	358	356	305	329	357	348	334	339	282	300	3905
Hasbaya	84	76	110	87	140	114	201	118	106	97	86	123	1342
Hermel	228	151	217	156	113	160	142	159	165	128	145	126	1890
Jbeil	113	99	143	122	60	150	125	143	146	152	139	132	1524
Jezzine	72	82	100	62	78	87	80	93	94	97	66	94	1005
Kesserouan	102	96	115	101	132	119	146	105	139	149	115	109	1428
Koura	57	83	111	75	66	75	55	97	40	33	50	55	797
Marjeyon	283	282	299	273	223	320	263	299	285	338	901	279	4045
Menieh-Dennieh	470	288	381	381	379	402	322	365	389	465	189	318	4349
Metn	160	144	187	171	156	145	179	158	192	111	160	152	1915
Nabatieh	171	195	171	153	193	184	191	198	222	97	166	179	2120
Rachaya	82	55	102	80	99	96	120	79	82	105	90	98	1088
Saida	804	684	864	689	689	741	681	743	788	700	741	915	9039
Sour	510	428	509	421	415	508	504	527	503	439	465	502	5731
Tripoli	527	458	499	430	447	544	492	525	579	491	522	444	5958
Zahle	321	351	500	100	462	379	393	404	339	326	326	405	4306
Zgharta	153	167	139	134	172	109	164	103	146	173	142	104	1706
Beirut	586	669	835	670	673	808	733	770	749	689	859	669	8710
Total	7957	7168	8590	6858	7129	7731	7217	7840	7772	7367	7632	6906	90167

Table B.2: Registered Deaths By Month and Qada, 2012

Qadaa	January	February	March	April	May	June	July	August	September	October	November	December	Total
Akkar	169	143	176	129	123	128	109	114	129	136	139	133	1628
Aley	115	78	118	63	86	67	71	58	71	83	82	65	957
Baabda	105	48	70	63	53	59	66	59	60	82	52	67	784
Baalback	30	64	48	64	20	14	0	0	62	52	0	0	354
Batroun	44	41	42	40	36	42	40	29	36	40	61	35	486
Bcharri	37	18	26	23	20	31	16	23	27	18	28	34	301
West Bekaa	45	41	44	43	51	45	35	31	34	36	45	58	508
Bint Jbeil	68	58	70	59	67	70	61	64	56	80	57	63	773
Chouf	137	119	148	110	113	116	115	81	88	123	121	102	1373
Hasbaya	29	22	33	26	23	24	28	20	14	27	25	27	298
Hermel	20	21	32	28	15	23	18	18	27	14	20	19	255
Jbeil	60	62	64	50	46	49	48	59	56	48	52	50	644
Jezzine	58	55	42	18	29	39	24	42	34	49	28	33	451
Kesserouan	73	75	85	57	61	63	50	52	64	64	56	69	769
Koura	39	35	35	29	25	23	19	37	21	38	18	35	354
Marjeyon	68	45	85	63	43	42	52	48	36	60	47	52	641
Menieh-Dennieh	66	52	82	70	59	38	34	51	48	53	62	47	662
Metn	127	107	123	69	101	84	91	105	76	113	92	88	1176
Nabatieh	75	100	80	56	83	56	56	53	48	27	55	88	777
Rachaya	25	23	38	23	25	12	23	20	21	20	29	20	279
Saida	163	183	208	177	155	174	164	159	166	160	167	155	2031
Sour	116	102	95	77	82	78	88	87	68	92	79	95	1059
Tripoli	114	112	134	97	93	125	90	97	110	92	122	107	1293
Zahle	77	99	88	358	90	80	111	88	92	96	80	16	1275
Zgharta	44	38	57	38	34	35	31	40	23	46	40	41	467
Beirut	278	325	309	273	239	212	232	255	325	223	252	274	3197
Total	2182	2066	2332	2103	1772	1729	1672	1690	1792	1872	1809	1773	22792

Table B.3: Most Recent* Population Distribution by Age Group and Gender Applied to 2012 Estimate**

Age groups	Percent			Population 2012		
	M	F	T	M	F	T
0-4	3.6	3.3	6.9	147,738	135,426	283,164
5-9	4.3	4.1	8.3	174,413	166,205	340,617
10-14	4.9	4.5	9.4	201,087	184,672	385,760
15-19	5.2	4.5	9.8	214,630	185,493	400,123
20-24	5.1	4.7	9.8	209,295	192,880	402,175
25-29	3.9	4.2	8.1	160,049	172,361	332,410
30-34	3.5	3.8	7.4	145,275	156,766	302,042
35-39	3.0	3.7	6.7	123,115	151,842	274,956
40-44	2.7	3.5	6.2	112,034	143,634	255,668
45-49	2.5	3.0	5.6	103,827	123,115	226,942
50-54	2.2	2.5	4.8	91,515	102,596	194,111
55-59	1.8	2.0	3.8	73,869	82,077	155,945
60-64	1.7	2.0	3.7	69,765	82,077	151,842
65-69	1.6	1.7	3.2	65,661	69,765	135,426
70-74	1.4	1.4	2.8	57,454	57,454	114,907
75-79	1.0	0.9	1.9	41,038	36,934	77,973
80-84	0.6	0.6	1.2	24,623	24,623	49,246
85+	0.3	0.2	0.5	12,311	8,208	20,519
Total	49.4	50.6	100.0	2,027,700	2,076,125	4,103,825

* CAS, 2007.

**Excluding Palestinian camps and displaced Syrians.

Table B.4: Resident Population* Distribution by Age Group and Qada, 2012

Qaza	%	0-4	5-9	10-14	15-19	20-24	25-29	30-34	35-39	40-44	45-49	50-54	55-59	60-64	65-69	70-74	75-79	80-84	85+	Total
Akkar	6.54	18,505	22,260	25,210	26,149	26,283	21,723	19,739	17,969	16,708	14,831	12,685	10,191	9,923	8,850	7,509	5,096	3,218	1,341	268,191
Minieh Danieh	3.15	8,909	10,717	12,137	12,589	12,653	10,458	9,503	8,651	8,044	7,140	6,107	4,906	4,777	4,261	3,615	2,453	1,549	646	129,116
Tripoli	6.75	19,101	22,977	26,022	26,991	27,129	22,423	20,374	18,547	17,246	15,309	13,094	10,519	10,243	9,135	7,751	5,260	3,322	1,384	276,827
Zgharta	1.50	4,248	5,110	5,788	6,003	6,034	4,987	4,532	4,125	3,836	3,405	2,912	2,340	2,278	2,032	1,724	1,170	739	308	61,570
Koura	1.40	3,976	4,783	5,417	5,619	5,648	4,668	4,242	3,861	3,590	3,187	2,726	2,190	2,132	1,902	1,614	1,095	692	288	57,629
Bchirreh	0.57	1,628	1,958	2,217	2,300	2,312	1,911	1,736	1,580	1,469	1,304	1,116	896	873	778	660	448	283	118	23,587
Batroun	1.05	2,974	3,578	4,052	4,203	4,225	3,492	3,173	2,888	2,686	2,384	2,039	1,638	1,595	1,423	1,207	819	517	216	43,108
	20.96																			
Hermel	1.37	3,879	4,666	5,284	5,481	5,509	4,553	4,137	3,766	3,502	3,109	2,659	2,136	2,080	1,855	1,574	1,068	675	281	56,212
Baalbeck	5.64	15,984	19,227	21,775	22,586	22,701	18,763	17,049	15,520	14,432	12,810	10,957	8,803	8,571	7,644	6,486	4,401	2,780	1,158	231,648
Zahleh	3.92	11,104	13,357	15,127	15,690	15,771	13,035	11,844	10,782	10,026	8,899	7,612	6,115	5,954	5,311	4,506	3,058	1,931	805	160,925
Rachaya	0.84	2,378	2,861	3,240	3,360	3,378	2,792	2,537	2,309	2,147	1,906	1,630	1,310	1,275	1,137	965	655	414	172	34,466
West Beqaa	1.92	5,445	6,550	7,418	7,694	7,734	6,392	5,808	5,287	4,916	4,364	3,733	2,999	2,920	2,604	2,210	1,499	947	395	78,916
	13.70																			
Nabatieh	2.90	8,226	9,895	11,206	11,623	11,683	9,656	8,774	7,987	7,427	6,593	5,639	4,530	4,411	3,934	3,338	2,265	1,431	596	119,214
Hasbaya	0.68	1,931	2,323	2,631	2,729	2,743	2,267	2,060	1,875	1,744	1,548	1,324	1,064	1,036	924	784	532	336	140	27,988
Marjayoun	1.62	4,584	5,515	6,245	6,478	6,511	5,382	4,890	4,452	4,139	3,674	3,143	2,525	2,458	2,193	1,860	1,262	797	332	66,441
Bint Jbeil	2.01	5,682	6,835	7,740	8,029	8,070	6,670	6,061	5,517	5,130	4,554	3,895	3,129	3,047	2,717	2,306	1,565	988	412	82,345
	7.21																			
Saida	5.47	15,499	18,644	21,115	21,901	22,013	18,195	16,532	15,050	13,994	12,422	10,625	8,536	8,311	7,413	6,289	4,268	2,695	1,123	224,624
Sour	5.39	15,252	18,346	20,778	21,551	21,662	17,904	16,269	14,810	13,771	12,224	10,455	8,400	8,178	7,294	6,189	4,200	2,652	1,105	221,040
Jezzine	0.64	1,820	2,190	2,480	2,572	2,585	2,137	1,942	1,767	1,643	1,459	1,248	1,002	976	871	739	501	317	132	26,380
	11.50																			
Jbeil	2.16	6,117	7,358	8,333	8,643	8,688	7,181	6,525	5,940	5,523	4,902	4,193	3,369	3,280	2,925	2,482	1,684	1,064	443	88,650
Kesrouan	4.04	11,445	13,768	15,592	16,173	16,256	13,436	12,208	11,114	10,334	9,173	7,846	6,303	6,137	5,474	4,645	3,152	1,991	829	165,875
Metn	11.72	33,185	39,918	45,208	46,891	47,132	38,956	35,397	32,223	29,962	26,596	22,748	18,276	17,795	15,871	13,466	9,138	5,771	2,405	480,936
Baabda	11.79	33,381	40,153	45,475	47,168	47,410	39,186	35,606	32,413	30,139	26,753	22,883	18,384	17,900	15,965	13,546	9,192	5,805	2,419	483,777
Aley	3.28	9,301	11,188	12,670	13,142	13,210	10,918	9,921	9,031	8,397	7,454	6,376	5,122	4,987	4,448	3,774	2,561	1,617	674	134,791
Chouf	4.13	11,684	14,054	15,917	16,510	16,594	13,716	12,463	11,345	10,549	9,364	8,009	6,435	6,265	5,588	4,741	3,217	2,032	847	169,331
	37.12																			
Beirut	9.51	26,926	32,390	36,682	38,048	38,243	31,609	28,722	26,146	24,312	21,580	18,458	14,829	14,439	12,878	10,927	7,415	4,683	1,951	390,238
	9.51																			
TOTAL	100.00	283,164	340,617	385,760	400,123	402,175	332,410	302,042	274,956	255,668	226,942	194,111	155,945	151,842	135,426	114,907	77,973	49,246	20,519	4,103,825

*Excluding Palestinian camps and displaced Syrians.

Table B.5: Resident Population* Distribution By Mohafaza and Qada, 2008-2012

Mohafaza	Qaza	Percent of Total Population, 2008	Population 2008	Population 2009	Population 2010	Population 2011	Population 2012	Percent Total Population, 2012
North	Akkar	6.13	234,328	241,012	249,642	258,788	268,191	6.54
	Minieh Danieh	3.01	115,004	118,293	121,722	125,429	129,116	3.15
	Tripoli	6.75	257,999	262,470	267,159	272,162	276,827	6.75
	Zgharta	1.48	56,638	57,403	58,479	60,331	61,570	1.50
	Koura	1.44	55,077	55,709	56,384	57,186	57,629	1.40
	Bchirreh	0.53	20,104	20,541	21,559	22,626	23,587	0.57
	Batroun	1.07	40,749	41,293	41,793	42,569	43,108	1.05
Total		20.39	779,900	796,722	816,739	839,092	860,029	20.96
Beqaa	Hermel	1.33	50,796	51,913	53,052	54,577	56,212	1.37
	Baalbeck	5.33	203,671	211,656	218,285	226,566	231,648	5.64
	Zahleh	3.88	148,384	151,257	154,642	157,894	160,925	3.92
	Rachaya	0.80	30,710	31,512	32,617	33,657	34,466	0.84
	West Beqaa	1.83	70,110	72,318	74,709	76,917	78,916	1.92
	Total		13.17	503,671	518,656	533,305	549,611	562,167
Nabatieh	Nabatieh	2.96	113,244	115,199	116,703	117,871	119,214	2.90
	Hasbaya	0.63	24,223	25,157	26,070	26,944	27,988	0.68
	Marjayoun	1.40	53,408	56,333	59,676	63,037	66,441	1.62
	Bint Jbeil	1.78	68,218	71,703	75,237	79,038	82,345	2.01
	Total		6.78	259,093	268,392	277,686	286,890	295,988
South	Saida	5.13	196,118	203,010	210,190	217,616	224,624	5.47
	Sour	5.29	202,400	206,875	211,601	216,368	221,040	5.39
	Jezzine	0.62	23,789	24,458	25,178	25,826	26,380	0.64
Total		11.04	422,307	434,343	446,969	459,810	472,044	11.50
Mount Lebanon	Jbeil	2.21	84,588	85,664	86,659	87,770	88,650	2.16
	Kesrouan	4.27	163,245	163,843	164,489	165,216	165,875	4.04
	Metn	12.50	477,851	478,737	479,510	480,197	480,936	11.72
	Baabda	12.52	478,616	480,074	481,423	482,690	483,777	11.79
	Aley	3.39	129,484	131,025	132,503	133,651	134,791	3.28
	Chouf	4.14	158,457	161,268	164,074	166,799	169,331	4.13
Total		39.02	1,492,241	1,500,611	1,508,658	1,516,323	1,523,360	37.12
Beirut	Beirut	9.59	366,907	372,743	378,464	384,725	390,238	9.51
Total		9.59	366,907	372,743	378,464	384,725	390,238	9.51
Total Population		100.00	3,824,118	3,891,466	3,961,820	4,036,450	4,103,825	100.00

**Excluding Palestinian camps and displaced Syrians.*

Table B.6: Resident Population* Distribution by Age Group, Qada and Some Basic Indicators, 2012

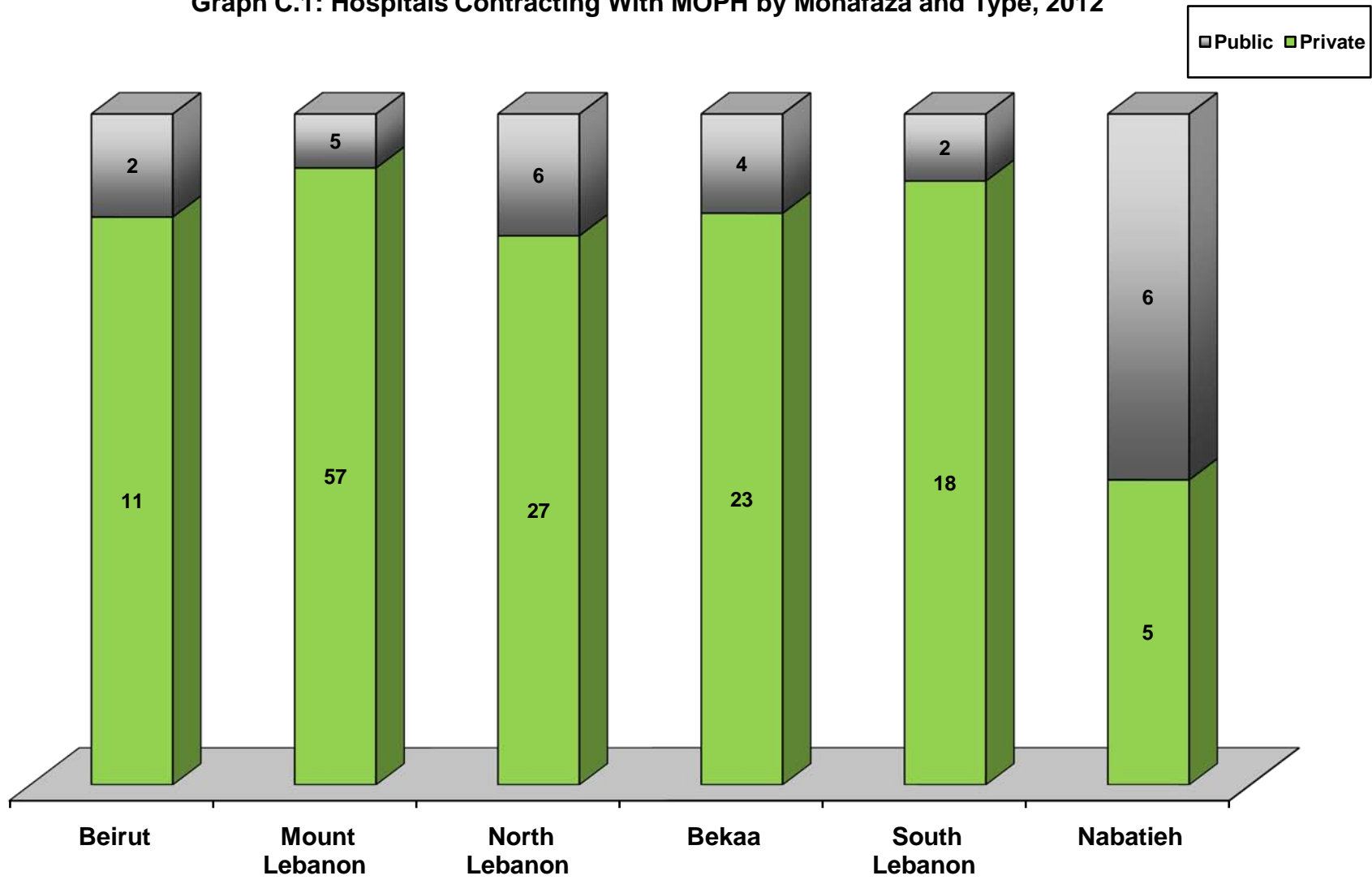
Qaza	0-4	5-9	10-14	<15 years	>65years	Active Population**	Total Population	Births	Deaths	CBR	CDR	RNI
Akkar	18,505	22,260	25,210	65,975	26,015	176,202	268,191	11031	1628	5.13	0.80	0.43
Minieh Danieh	8,909	10,717	12,137	31,762	12,524	84,829	129,116	4349	662	2.09	0.33	0.18
Tripoli	19,101	22,977	26,022	68,099	26,852	181,875	276,827	5958	1293	2.76	0.64	0.21
Zgharta	4,248	5,110	5,788	15,146	5,972	40,452	61,570	1706	467	0.83	0.23	0.06
Koura	3,976	4,783	5,417	14,177	5,590	37,862	57,629	797	354	0.39	0.18	0.02
Bchirreh	1,628	1,958	2,217	5,802	2,288	15,497	23,587	1262	301	0.62	0.15	0.05
Batroun	2,974	3,578	4,052	10,605	4,182	28,322	43,108	1025	486	0.50	0.24	0.03
Hermel	3,879	4,666	5,284	13,828	5,453	36,931	56,212	1890	255	0.92	0.13	0.08
Baalbeck	15,984	19,227	21,775	56,985	22,470	152,192	231,648	5436	354	2.55	0.18	0.24
Zahleh	11,104	13,357	15,127	39,588	15,610	105,728	160,925	4306	1275	2.05	0.63	0.14
Rachaya	2,378	2,861	3,240	8,479	3,343	22,644	34,466	1088	279	0.53	0.14	0.04
West Beqaa	5,445	6,550	7,418	19,413	7,655	51,848	78,916	2507	508	1.22	0.25	0.10
Nabatieh	8,226	9,895	11,206	29,327	11,564	78,324	119,214	2120	777	1.02	0.38	0.06
Hasbaya	1,931	2,323	2,631	6,885	2,715	18,388	27,988	1342	298	0.66	0.15	0.05
Marjayoun	4,584	5,515	6,245	16,344	6,445	43,652	66,441	4045	641	1.97	0.32	0.17
Bint Jbeil	5,682	6,835	7,740	20,257	7,987	54,101	82,345	4080	773	1.98	0.38	0.16
Saida	15,499	18,644	21,115	55,257	21,789	147,578	224,624	9039	2031	4.24	1.00	0.32
Sour	15,252	18,346	20,778	54,376	21,441	145,223	221,040	5731	1059	2.69	0.52	0.22
Jezzine	1,820	2,190	2,480	6,489	2,559	17,331	26,380	1005	451	0.49	0.22	0.03
Jbeil	6,117	7,358	8,333	21,808	8,599	58,243	88,650	1524	644	0.74	0.32	0.04
Kesrouan	11,445	13,768	15,592	40,805	16,090	108,980	165,875	1428	769	0.68	0.38	0.03
Metn	33,185	39,918	45,208	118,310	46,651	315,975	480,936	1915	1176	0.85	0.58	0.03
Baabda	33,381	40,153	45,475	119,009	46,926	317,841	483,777	1871	784	0.83	0.39	0.04
Aley	9,301	11,188	12,670	33,159	13,075	88,558	134,791	2097	957	1.01	0.47	0.05
Chouf	11,684	14,054	15,917	41,655	16,425	111,250	169,331	3905	1373	1.86	0.68	0.12
Beirut	26,926	32,390	36,682	95,999	37,853	256,386	390,238	8710	3197	3.94	1.58	0.24
TOTAL	283,164	340,617	385,760	1,009,541	398,071	2,696,213	4,103,825	90,167	22,792	22.15	5.60	1.66

*Excluding Palestinian camps and displaced Syrians.

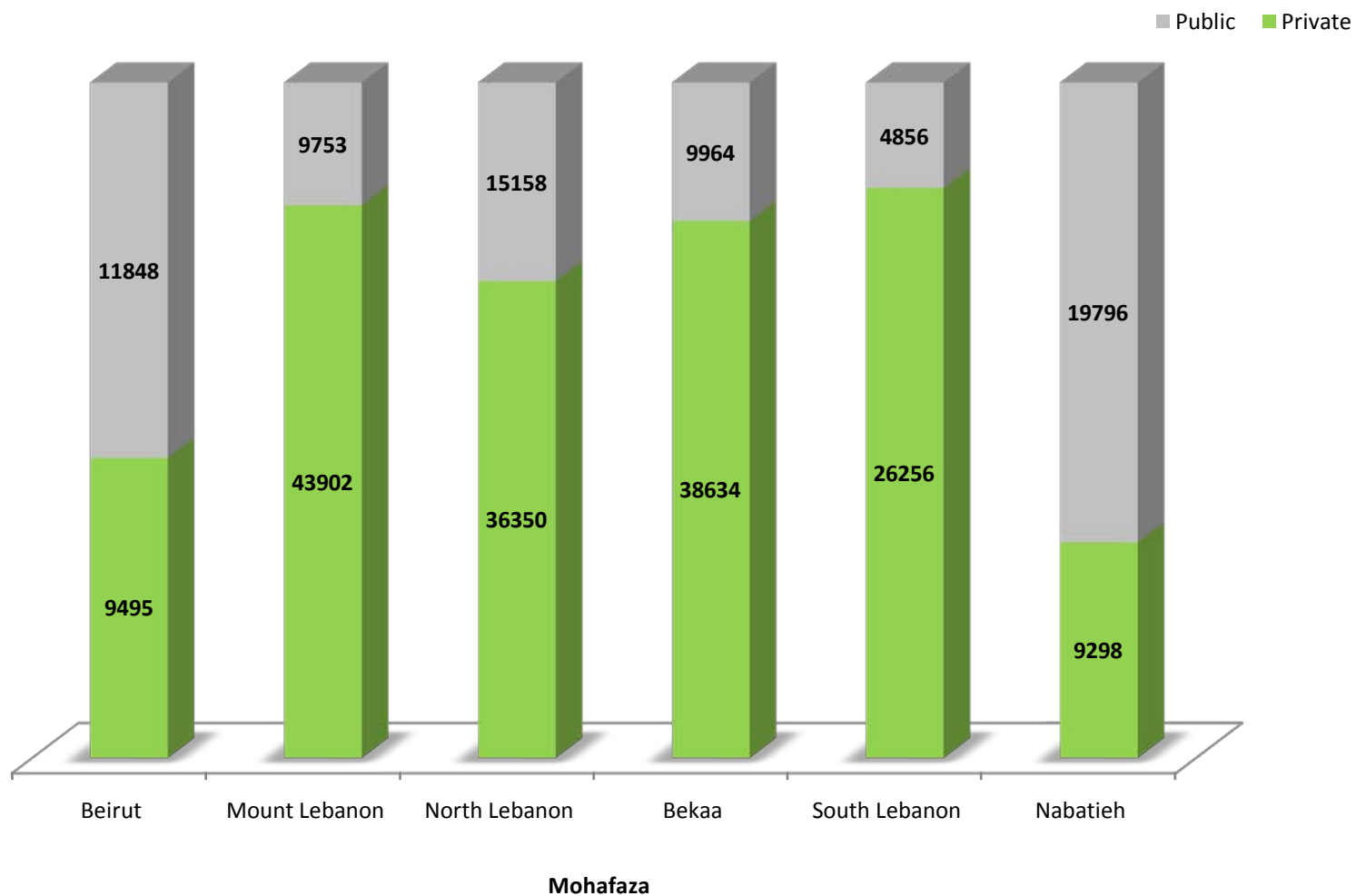
**Active Population: Population between 15-65 years of age regardless of their employment status.

CBR=Crude Birth Rate; CDR=Crude Death Rate; RNI=Rate of Natutal Increase

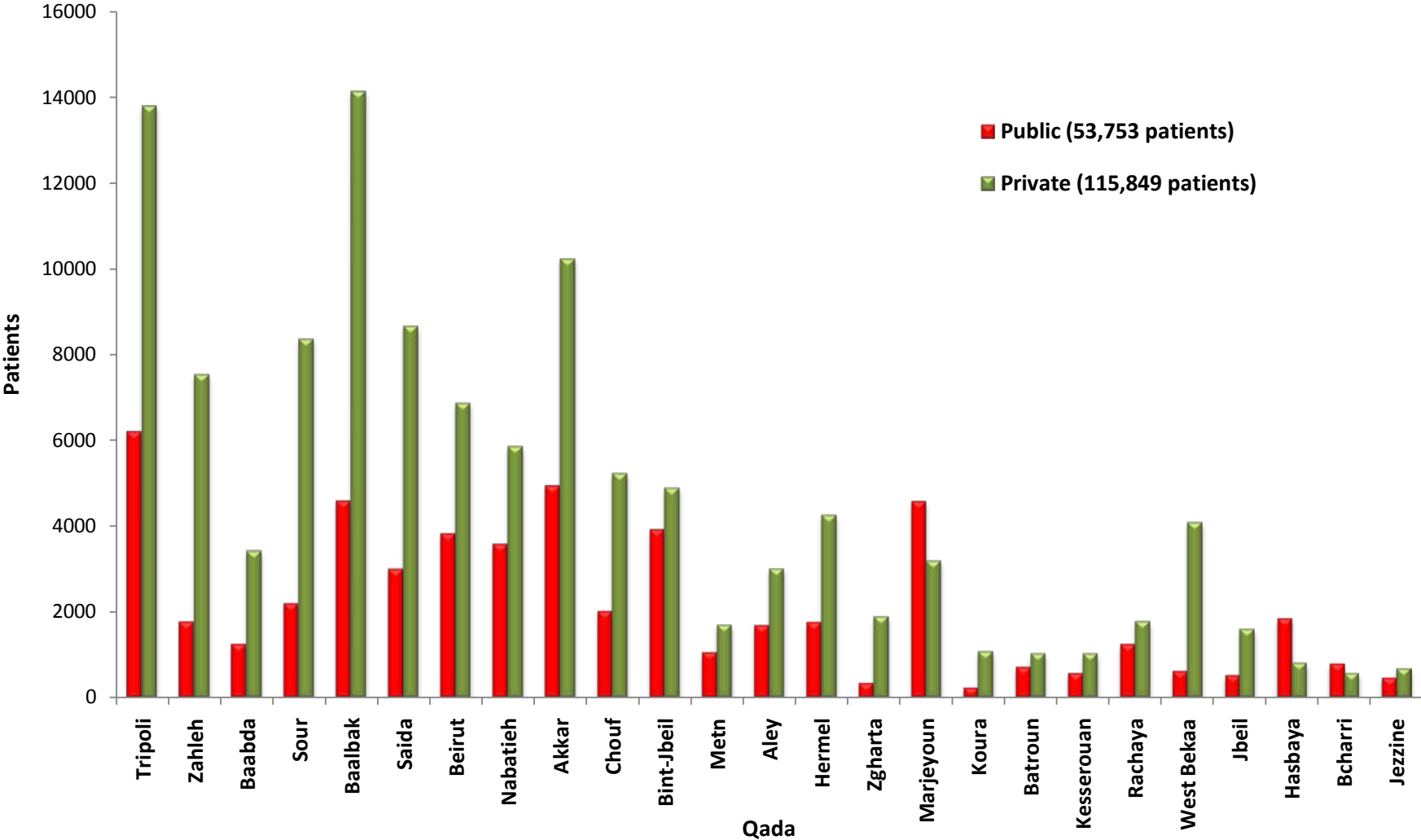
Graph C.1: Hospitals Contracting With MOPH by Mohafaza and Type, 2012



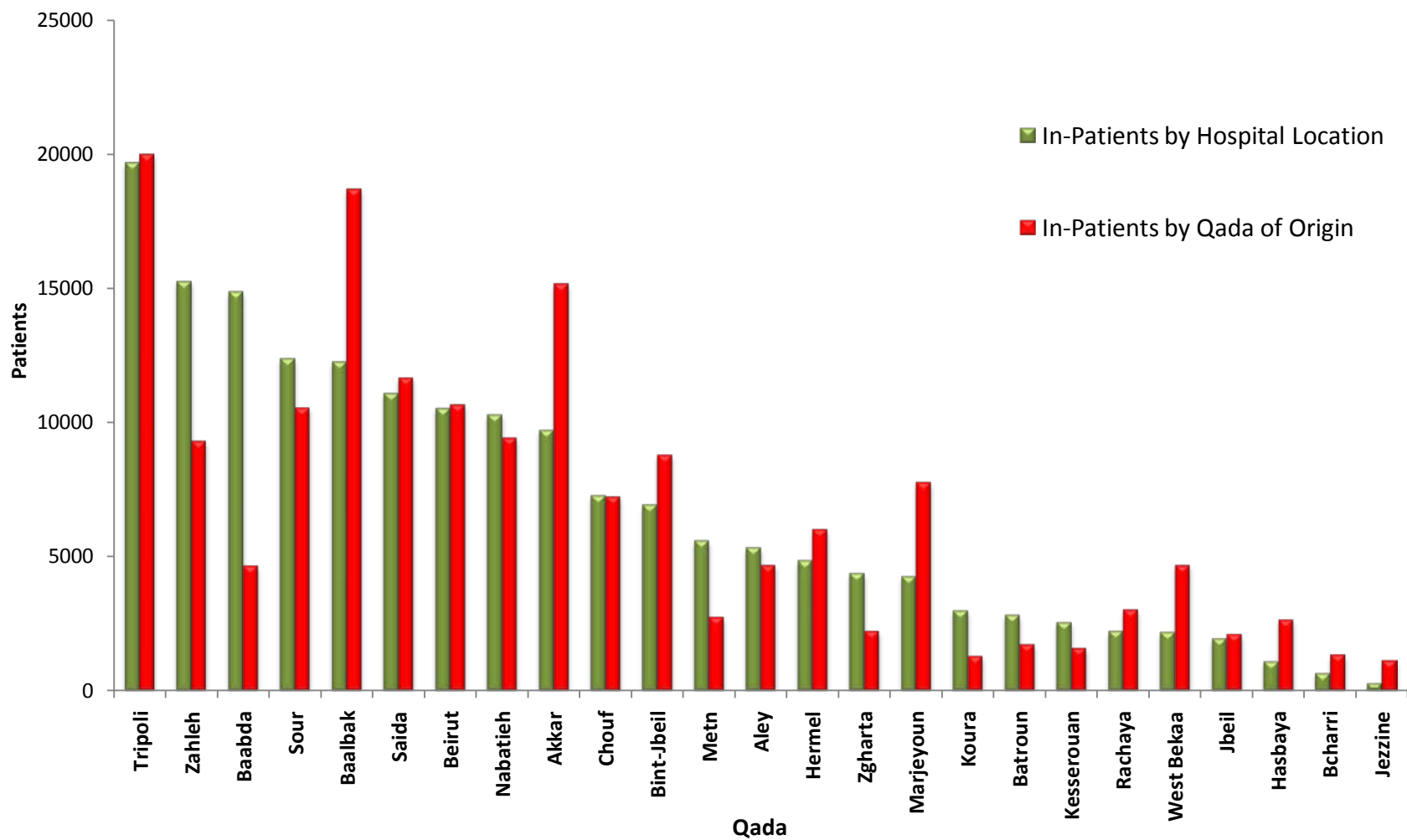
Graph C.2 : MOPH Subsidized Admissions by Type of Hospital and Location, 2012



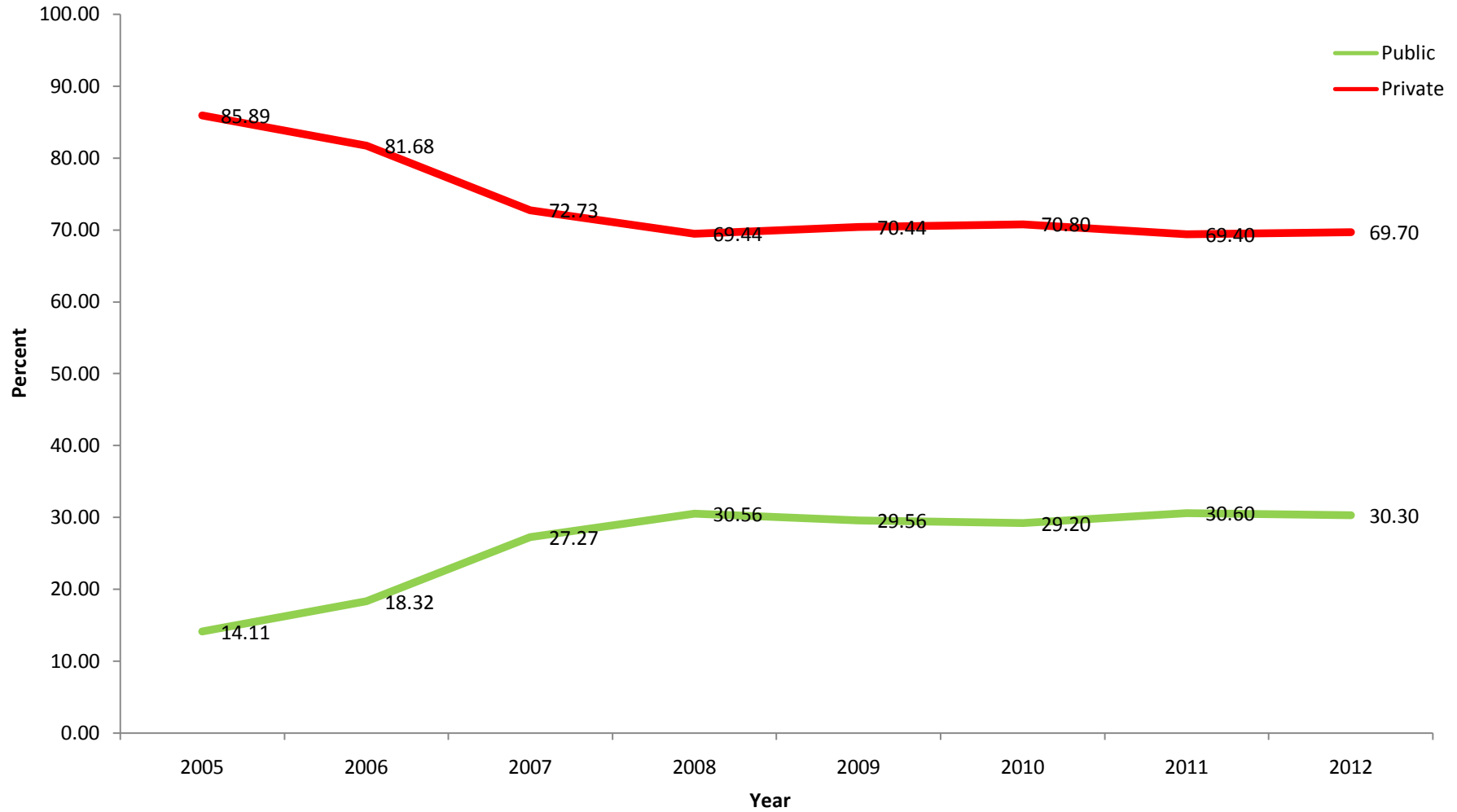
Graph C.3: MOPH Subsidized In-patients by Qada of Origin and Type of Hospital, 2012



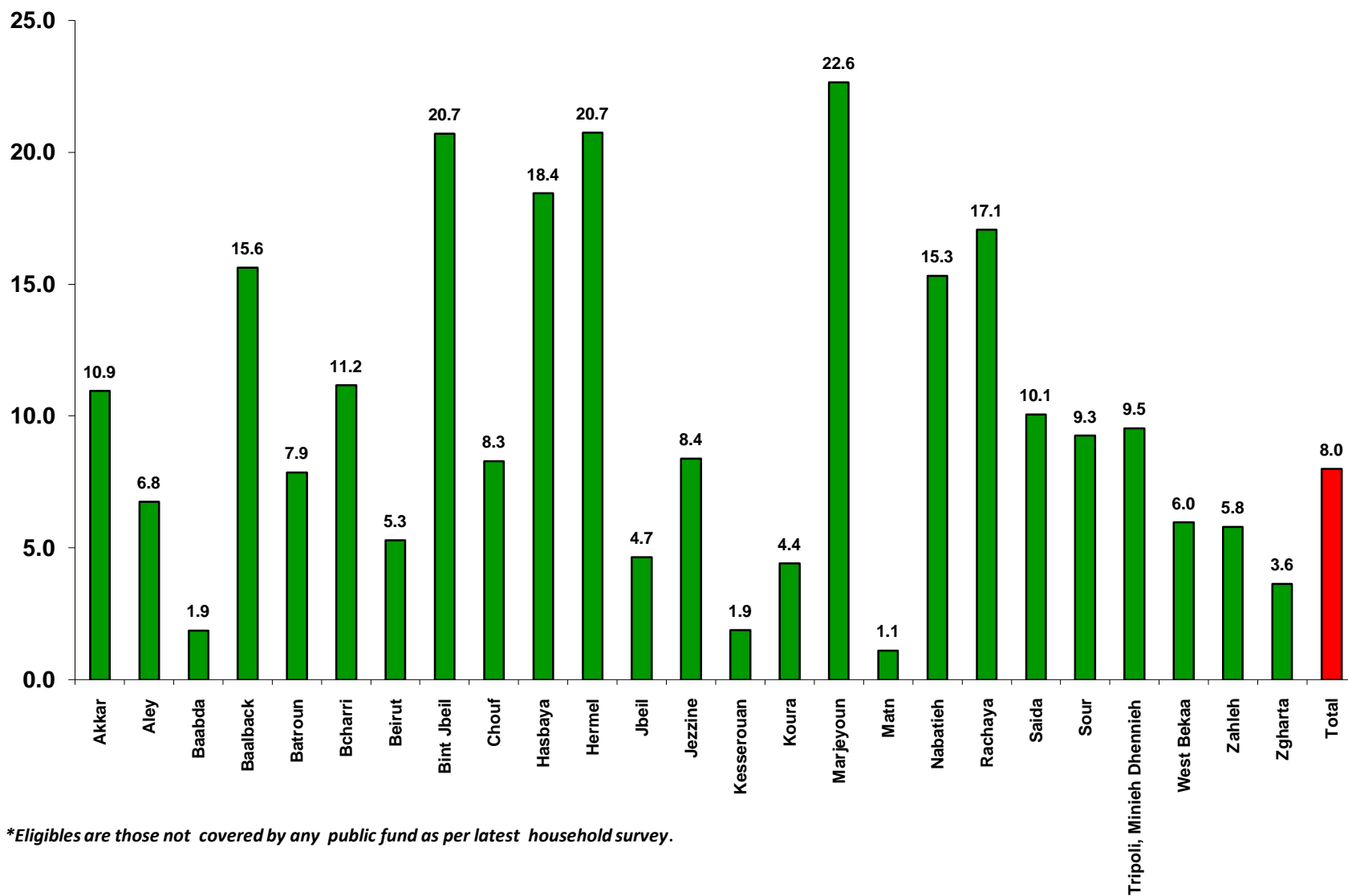
Graph C.4: MOPH Subsidized In-patients by Qada of Origin and Hospital Location, 2012



Graph C.5: The Evolution of MOPH Subsidized Admissions in Public and Private Hospitals Between 2005 and 2012



Graph C.6: Percent Population Hospitalized Among Eligible* Population by Qada, 2012



**Eligibles are those not covered by any public fund as per latest household survey.*

Table C.1: MOPH Subsidized Hospital Admissions By Categories of Diagnosis and Gender, 2012

ICD10	Codes	Description	M	F	T
Chapter 1	A00-B99	Certain Infectious and Parasitic Diseases	M	F	T
	A00-A09	Intestinal Infectious Diseases	4,923	4,544	9,467
	A15-A19	Tuberculosis	11	12	23
	A20-A28	Certain zoonotic bacterial diseases	22	20	42
	A30-A49	Other bacterial diseases	311	333	644
	A50-A64	Infections with a predominantly sexual mode of transmission	6	5	11
	A65-A69	Other spirochaetal diseases	5	5	10
	A70-A74	Other diseases caused by chlamydiae	0	0	0
	A75-A79	Rickettsioses	7	1	8
	A80-A89	Viral Infections of the CNS	10	18	28
	A90-A99	Arthropod-borne viral fevers and viral hemorrhagic fevers	1	0	1
	B00-B09	Viral Infections characterized by skin and mucous membrane lesions	32	29	61
	B15-B19	Viral hepatitis	106	67	173
	B20-B24	Human Immunodeficiency Virus [HIV] disease	14	3	17
	B25-B34	Other viral diseases	13	7	20
	B35-B49	Mycoses	4	3	7
	B50-B64	Protozoal diseases	23	8	31
	B65-B83	Helminthiases	13	13	26
	B85-B89	Pediculosis, acariasis and other infestations	2	1	3
	B90-B94	Sequelae of infectious and parasitic diseases	1	1	2
	B95-B97	Bacterial, viral and other infectious agents	4	3	7
	B99	Other infectious diseases	52	46	98
Total			5,560	5,119	10,679
Chapter 2	C00-D48	Neoplasms	M	F	T
	C00-C97	Malignant Neoplasms	10,852	16,587	27,439
	C00-C14.8	<i>lip oral cavity and pharynx</i>	174	122	296
	C15-C26.9	<i>digestive organs</i>	1,663	1,733	3,396
	C30-C39.9	<i>respiratory and intrathoracic organs</i>	1,914	1,041	2,955
	C40-C41.9	<i>bone and articular cartilage</i>	157	110	267
	C43-C44.9	<i>melanoma and other malignant neoplasms of skin</i>	87	63	150
	C45-C49.9	<i>mesothelial and soft tissue</i>	184	157	341
	C50-C50.9	<i>breast</i>	317	7,568	7,885
	C51-C58	<i>female genital organs</i>	0	1,271	1,271
	C60,C62-C63	<i>male genital organs-excluding prostate</i>	242	0	242
	C61	<i>prostate</i>	606	0	606
	C64-C68.9	<i>urinary tract</i>	1,033	294	1,327
	C69-C72.9	<i>eye,brain, and other parts of CNS</i>	353	271	624
	C73-C75.9	<i>thyroid and other endocrine glands</i>	220	185	405
	C76-C80	<i>ill-defined, secondary, and unspecified sites</i>	400	463	863
	C81-C96.9	<i>lymphoid, haematopoietic and related tissue</i>	3,500	3,309	6,809
	C97	<i>independent (primary) multiple sites</i>	2	0	2
	D00-D09	In situ neoplasms	62	61	123
	D10-D36	Benign neoplasms	734	1,545	2,279
	D37-D48	Neoplasms of uncertain and unknown behavior	257	243	500
Total			11,905	18,436	30,341

ICD10	Codes	Description	M	F	T
Chapter 3	D50-D53	Diseases of the blood and blood forming organs and	M	F	T
	D50-D53	Nutritional anaemias	276	454	730
	D55-D59	Haemolytic anaemias	731	494	1,225
	D60-D64	Aplastic and other anaemias	683	881	1,564
	D65-D69	Coagulation defects, purpura and other haemorrhagic conditions	186	132	318
	D70-D77	Other diseases of the blood and blood forming organs	17	36	53
	D80-D89	Certain disorders involving the immune mechanism	98	62	160
Total			1,991	2,059	4,050
Chapter 4	E00-E90	Endocrine, nutritional and metabolic diseases	M	F	T
	E00-E07	Disorders of thyroid gland	161	817	978
	E10-E14	Diabetes mellitus	1,285	1,747	3,032
	E15-E16	Other disorders of glucose regulation and pancreatic internal secretion	42	59	101
	E20-E35	Disorders of other endocrine glands	84	116	200
	E40-E46	Malnutrition	7	5	12
	E50-E64	Other nutritional deficiencies	5	11	16
	E65-E68	Obesity and other hyperalimentation	168	365	533
	E70-E90	Metabolic disorders	249	237	486
Total			2,001	3,357	5,358
Chapter 5	F00-F99	Mental and behavioral disorders	M	F	T
	F00-F09	Organic, including symptomatic, mental disorders	23	63	86
	F10-F19	Mental and Behavioral disorders due to psychoactive substance abuse	94	47	141
	F20-F29	Schizophrenia, schizotypal and delusional disorders	498	300	798
	F30-F39	Mood [affective] disorders	69	74	143
	F40-F48	Neurotic, stress-related and somatoform disorders	43	63	106
	F50-F59	Behavioral syndromes associated with physiological disturbances and physical factors	3	7	10
	F60-F69	Disorders of adult personality and behaviour	3	6	9
	F70-F79	Mental retardation	63	55	118
	F80-F89	Disorders of psychological development	6	8	14
	F90-F98	Behavioral and emotional disorders with onset usually occurring in childhood and adolescence	1	6	7
	F99	Unspecified mental disorder	1	0	1
Total			804	629	1,433
Chapter 6	G00-G99	Diseases of the nervous system	M	F	T
	G00-G09	Inflammatory diseases of the central nervous system	150	136	286
	G10-G13	Systemic atrophies primarily affecting the nervous system	22	31	53
	G20-G26	Extrapyramidal and mood disorders	49	47	96
	G30-G32	Other degenerative diseases of the nervous system	35	22	57
	G35-G37	Demyelinating diseases of the CNS	89	137	226
	G40-G47	Episodic and paroxysmal disorders	764	677	1,441
	G50-G59	Nerve, nerve root and plexus disorders	180	530	710
	G60-G64	Polyneuropathies and other disorders of the peripheral NS	49	38	87
	G70-G73	Diseases of myoneural junction and muscle	14	17	31
	G80-G83	Cerebral palsy and other paralytic syndromes	640	546	1,186
	G90-G99	Others disorders of the nervous system	145	144	289
Total			2,137	2,325	4,462

ICD10	Codes	Description	M	F	T
Chapter 7	H00-H59	Diseases of the eye and adnexa	M	F	T
	H00-H06	Disorders of eyelid, lachrymal system and orbit	87	133	220
	H10-H13	Disorders of conjunctiva	46	52	98
	H15-H22	Disorders of sclera, cornea, iris, and ciliary body	130	110	240
	H25-H28	Disorders of lens	2,670	3,468	6,138
	H30-H36	Disorders of choroid and retina	83	67	150
	H40-H42	Glaucoma	111	121	232
	H43-H45	Disorders of vitreous body and globe	134	95	229
	H46-H48	Disorders of optic nerve and visual pathways	2	4	6
	H49-H52	Disorders of ocular muscles, binocular movement accommodation and refraction	85	69	154
	H53-H54	Visual disturbances and blindness	36	37	73
	H55-H59	Other disorders of eye and adnexa	91	87	178
Total			3,475	4,243	7,718
Chapter 8	H60-H95	Diseases of the ear and mastoid process	M	F	T
	H60-H62	Diseases of the external ear	167	113	280
	H65-H75	Diseases of the middle ear and mastoid	525	443	968
	H80-H83	Diseases of the inner ear	133	204	337
	H90-H95	Other disorders of ear	52	52	104
Total			877	812	1,689
Chapter 9	I00-I99	Diseases of the circulatory system	M	F	T
	I00-I02	Acute rheumatic fever	25	23	48
	I05-I09	Chronic rheumatic heart disease	73	93	166
	I10-I15	Hypertensive diseases	2,711	3,967	6,678
	I20-I25	Ischemic heart diseases	9,365	6,724	16,089
	I26-I28	Pulmonary heart disease and diseases of the pulmonary circulation	35	50	85
	I30-I52	Other forms of heart disease	2,717	3,075	5,792
	I60-I69	Cerebrovascular diseases	1,306	1,303	2,609
	I70-I79	Diseases of arteries arterioles and capillaries	629	398	1,027
	I80-I89	Diseases of veins,lymphatic vessels and lymph nodes NEC	1,442	727	2,169
	I95-I99	Other and unspecified disorders of the circulatory system	143	202	345
Total			18,446	16,562	35,008
Chapter 10	J00-J99	Diseases of the respiratory system	M	F	T
	J00-J06	Acute upper respiratory infections	1,255	1,010	2,265
	J10-J18	Influenza and pneumonia	5,670	4,869	10,539
	J20-J22	Other acute lower respiratory infections	1,639	1,369	3,008
	J30-J39	Other diseases of upper respiratory tract	3,724	3,208	6,932
	J40-J47	Chronic lower respiratory diseases	1,827	1,866	3,693
	J60-J70	Lung diseases due to external agents	35	49	84
	J80-J84	Other resp. diseases principally affecting interstitium	911	1,036	1,947
	J85-J86	Suppurative and necrotic conditions of lower tract	27	10	37
	J90-J94	Other diseases of pleura	202	148	350
	J95-J99	Other diseases of the respiratory system	288	241	529
Total			15,578	13,806	29,384

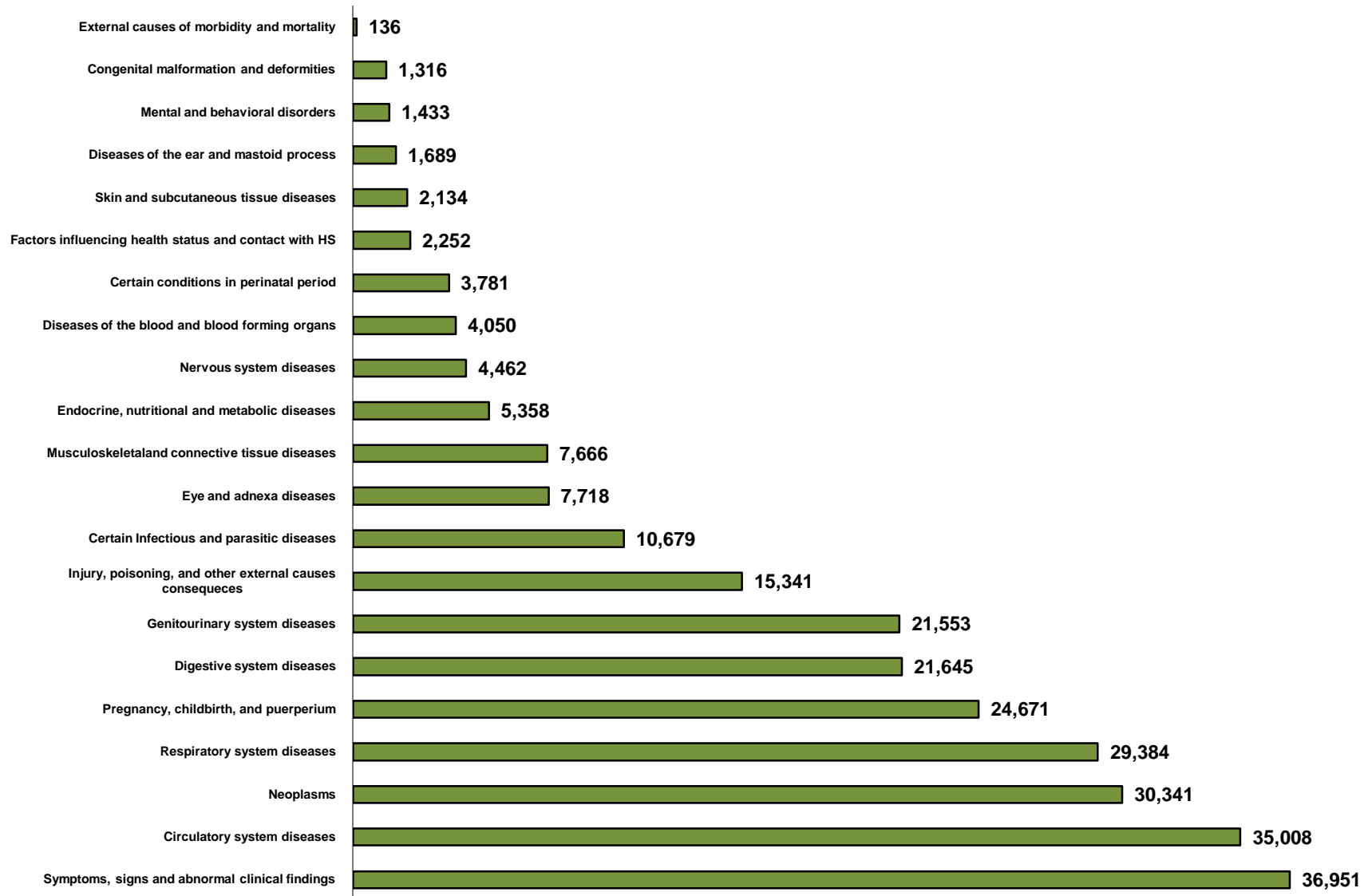
ICD10	Codes	Description	M	F	T
Chapter 11	K00-K93	Diseases of the digestive system	M	F	T
	K00-K14	Diseases of oral cavity salivary glands and jaws	262	305	567
	K20-K31	Diseases of oesophagus, stomach and duodenum	1,186	1,631	2,817
	K35-K38	Diseases of appendix	906	914	1,820
	K40-K46	Hernia	3,990	1,345	5,335
	K50-K52	Noninfective enteritis and colitis	811	900	1,711
	K55-K63	Other diseases of intestines	1,560	1,108	2,668
	K65-K67	Diseases of peritoneum	152	185	337
	K70-K77	Diseases of liver	320	194	514
	K80-K87	Disorders of gallbladder, biliary tract and pancreas	1,472	3,537	5,009
	K90-K93	Other diseases of the digestive system	441	426	867
Total			11,100	10,545	21,645
Chapter 12	L00-L99	Diseases of the skin and subcutaneous tissue	M	F	T
	L00-L08	Infections of the skin and subcutaneous tissue	818	478	1,296
	L10-L14	Bullous disorders	1	4	5
	L20-L30	Dermatitis and eczema	6	9	15
	L40-L45	Papulosquamous disorders	17	11	28
	L50-L54	Urticaria and erythema	30	42	72
	L55-L59	Radiation-related disorders of the skin and subcutaneous tissue	2	0	2
	L60-L75	Disorders of skin appendages	29	13	42
	L80-L99	Other disorders of the skin and subcutaneous tissue	385	289	674
Total			1,288	846	2,134
Chapter 13	M00-M99	Diseases of the musculoskeletal system and connective tissue	M	F	T
	M00-M25	Arthropathies	1,274	1,774	3,048
	M0-M03	<i>infectious arthropathies</i>	24	26	50
	M05-M14.8	<i>inflammatory polyarthropathies</i>	245	416	661
	M15-M19.9	<i>arthrosis</i>	353	604	957
	M20-M25.9	<i>other joint disorders</i>	652	728	1,380
	M30-M36	Systemic connective tissue disorders	40	69	109
	M40-M54	Dorsopathies	1,052	1,418	2,470
	M40-M43.9	<i>deforming dorsopathies</i>	27	28	55
	M45-M49.8	<i>spondylopathies</i>	90	142	232
	M50-M54.9	<i>other dorsopathies</i>	935	1,248	2,183
	M60-M79	Soft tissue disorders	511	647	1,158
	M60-M63.8	<i>disorders of muscles</i>	77	73	150
	M65-M68.8	<i>disorders of synovium and tendon</i>	173	301	474
	M70-M79.9	<i>other soft tissue disorders</i>	261	273	534
	M80-M94	Osteopathies and chondropathies	465	348	813
	M80-M85.9	<i>disorders of bonedensity and structure</i>	163	124	287
	M86-M90.8	<i>other osteopathies</i>	287	190	477
	M91-M94.9	<i>chondropathies</i>	15	34	49
	M95-M99	Other disorders of the musculoskeletal system and connective tissue	39	29	68
Total			3,381	4,285	7,666

ICD10	Codes	Description	M	F	T
Chapter 14	N00-N99	Diseases of the genitourinary system	M	F	T
	N00-N08	Glomerular diseases	144	139	283
	N10-N16	Renal tubulo-interstitial diseases	646	726	1,372
	N17-N19	Renal failure	1,350	1,301	2,651
	N20-N23	Urolithiasis	4,318	2,811	7,129
	N25-N29	Other disorders of kidney and ureter	35	73	108
	N30-N39	Other diseases of the urinary system	1,234	1,652	2,886
	N40-N51	Diseases of male genital organs	2,053	0	2,053
	N60-N64	Disorders of breast	28	361	389
	N70-N77	Inflammatory diseases of female pelvic organs	0	336	336
	N80-N98	Noninflammatory disorders of female genital tract	0	4,323	4,323
	N99	Other disorders of the genitourinary system	7	16	23
Total			9,815	11,738	21,553
Chapter 15	O00-O99	Pregnancy, childbirth and puerperium	M	F	T
	O00-O08	Pregnancy with abortive outcome	0	1,316	1,316
	O10-O16	Oedema, proteinuria and hypertensive disorders in pregnancy, childbirth and the puerperium	0	45	45
	O20-O29	Other maternal disorders predominantly related to pregnancy	0	234	234
	O30-O48	Maternal care related to the fetus and amniotic cavity and possible delivery problems	0	243	243
	O60-O75	Complications of labor and delivery	0	190	190
	O80-O84	Delivery	0	22,583	22,583
	O85-O92	Complications predominantly related to the puerperium	0	35	35
	O95-O99	Other obstetric conditions NEC	0	25	25
Total			0	24,671	24,671
Chapter 16	P00-P96	Certain conditions originating in the perinatal period	M	F	T
	P00-P04	Fetus and newborn affected by maternal factors and by complications of pregnancy labour and delivery	39	102	141
	P05-P08	Disorders related to length of gestation and fetal growth	248	204	452
	P10-P15	Birth trauma	1	6	7
	P20-P29	Respiratory and cardiovascular disorders specific to the perinatal period	1,266	795	2,061
	P35-P39	Infections specific to the perinatal period	219	185	404
	P50-P61	Haemorrhagic and haematological disorders of fetus and newborn	294	273	567
	P70-P74	Transitory endocrine and metabolic disorders specific to fetus and newborn	37	39	76
	P75-P78	Digestive system disorders of fetus and newborn	10	10	20
	P80-P83	Conditions involving the integument and temperature regulation of fetus and newborn	12	7	19
	P90-P96	Other disorders originating in the perinatal period	17	17	34
Total			2,143	1,638	3,781

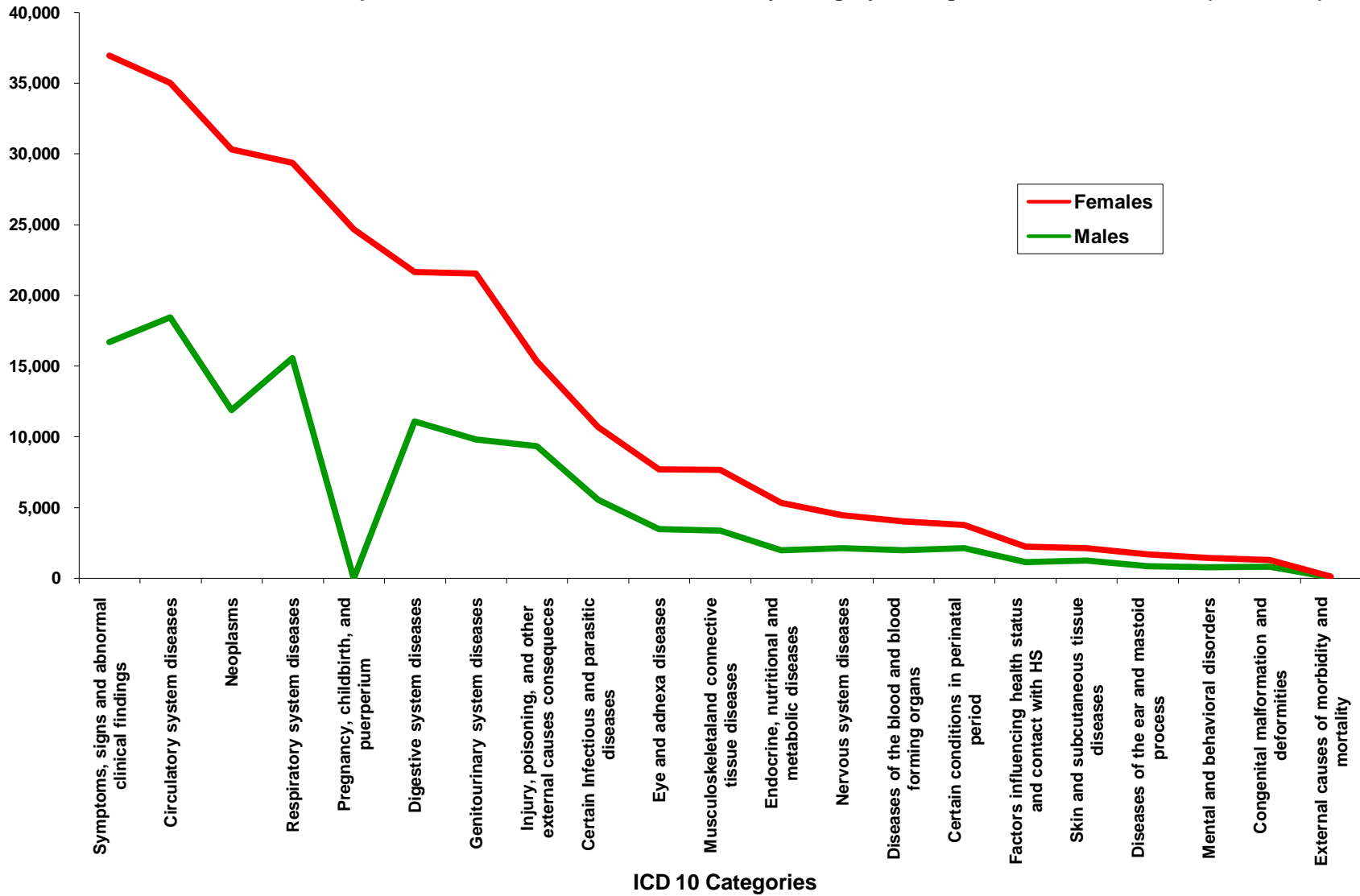
ICD10	Codes	Description	M	F	T
Chapter 17	Q00-Q99	Congenital malformations, deformations and chromosomal abnormalities	M	F	T
	Q00-Q07	Congenital malformations of the nervous system	20	36	56
	Q10-Q18	Congenital malformations of eye, ear, face and neck	19	17	36
	Q20-Q28	Congenital malformations of the circulatory system	85	66	151
	Q30-Q34	Congenital malformations of the respiratory system	13	7	20
	Q35-Q37	Cleft lip and cleft palate	33	23	56
	Q38-Q45	Other congenital malformations of the digestive system	46	42	88
	Q50-Q56	Congenital malformations of the genital organs	393	29	422
	Q60-Q64	Congenital malformations of the urinary system	131	86	217
	Q65-Q79	Congenital malformations and deformations of the musculoskeletal system	95	137	232
	Q80-Q89	Other congenital malformations	16	12	28
	Q90-Q99	Chromosomal abnormalities, NEC	2	8	10
Total			853	463	1,316
Chapter 18	R00-R99	Symptoms, signs and abnormal clinical and laboratory findings NEC	M	F	T
	R00-R09	Symptoms and signs involving the circulatory and respiratory systems	4,059	4,281	8,340
	R10-R19	Symptoms and signs involving the digestive system and abdomen	6,131	9,662	15,793
	R20-R23	Symptoms and signs involving the skin and subcutaneous tissue	123	139	262
	R25-R29	Symptoms and signs involving the nervous and musculoskeletal systems	42	33	75
	R30-R39	Symptoms and signs involving the urinary system	884	461	1,345
	R40-R46	Symptoms and signs involving cognition, perception, emotional state and behaviour	539	717	1,256
	R47-R49	Symptoms and signs involving speech and voice	14	20	34
	R50-R69	General symptoms and signs	4,806	4,836	9,642
	R70-R79	Abnormal findings on examination of blood, without diagnosis	51	53	104
	R80-R82	Abnormal findings on examination of urine, without diagnosis	28	30	58
	R83-R89	Abnormal findings on examination of other body fluids substances and tissues, without diagnosis	6	14	20
	R90-R94	Abnormal findings on diagnostic imaging and in function studies, without diagnosis	10	8	18
	R95-R99	Ill-defined and unknown causes of mortality	2	2	4
Total			16,695	20,256	36,951

ICD10	Codes	Description	M	F	T
Chapter 19	S00-T98	Injury, poisoning and certain other consequences of external causes	M	F	T
	S00-S09	Injuries to the head	1,236	623	1,859
	S10-S19	Injuries to the neck	226	121	347
	S20-S29	Injuries to the thorax	142	75	217
	S30-S39	Injuries to the abdomen, lower back, lumbar spine and pelvis	198	143	341
	S40-S49	Injuries to the shoulder and upper arm	627	481	1,108
	S50-S59	Injuries to the elbow and forearm	1,016	616	1,632
	S60-S69	Injuries to the wrist and hand	1,039	494	1,533
	S70-S79	Injuries to the hip and thigh	1,032	1,189	2,221
	S80-S89	Injuries to the knee and lower leg	1,211	596	1,807
	S90-S99	Injuries to the ankle and foot	335	197	532
	T00-T07	Injuries involving multiple body regions	1,331	756	2,087
	T08-T14	Injuries to unspecified part of trunk, limb or body region	333	165	498
	T15-T19	Effects of foreign body entering through natural orifice	43	25	68
	T20-T32	Burns and corrosions	116	83	199
	T33-T35	Frostbite	29	22	51
	T36-T50	Poisoning by drugs, medicaments and biological substances	38	43	81
	T51-T65	Toxic effects of substances chiefly nonmedicinal as to source	113	142	255
	T66-T78	Other and unspecified effects of external causes	83	74	157
	T79	Certain early complications of trauma	11	11	22
	T80-T88	Complications of surgical and medical care NEC	110	79	189
	T90-T98	Sequelae of injuries, of poisoning and of other consequences of external causes	64	73	137
Total			9,333	6,008	15,341
Chapter 20	V01-Y98	External causes of morbidity and mortality	M	F	T
Total			90	46	136
Chapter 21	Z00-Z99	Factors influencing health status and contact with health services	M	F	T
	Z00-Z13	Persons encountering health services for examination and investigation	49	92	141
	Z20-Z29	Persons with potential health hazards related to communicable diseases	14	8	22
	Z30-Z39	Persons encountering health services in circumstances related to reproduction	15	318	333
	Z40-Z54	Persons encountering health services for specific procedures and health care	845	544	1,389
	Z55-Z65	Persons with potential health hazards related to socioeconomic and psychosocial circumstances	2	4	6
	Z70-Z76	Persons encountering health services in other circumstances	6	3	9
	Z80-Z99	Persons with potential health hazards related to family and personal history and certain conditions influencing health status	241	111	352
Total			1,172	1,080	2,252
Total Number of Hospitalized Diagnoses			118,644	148,924	267,568

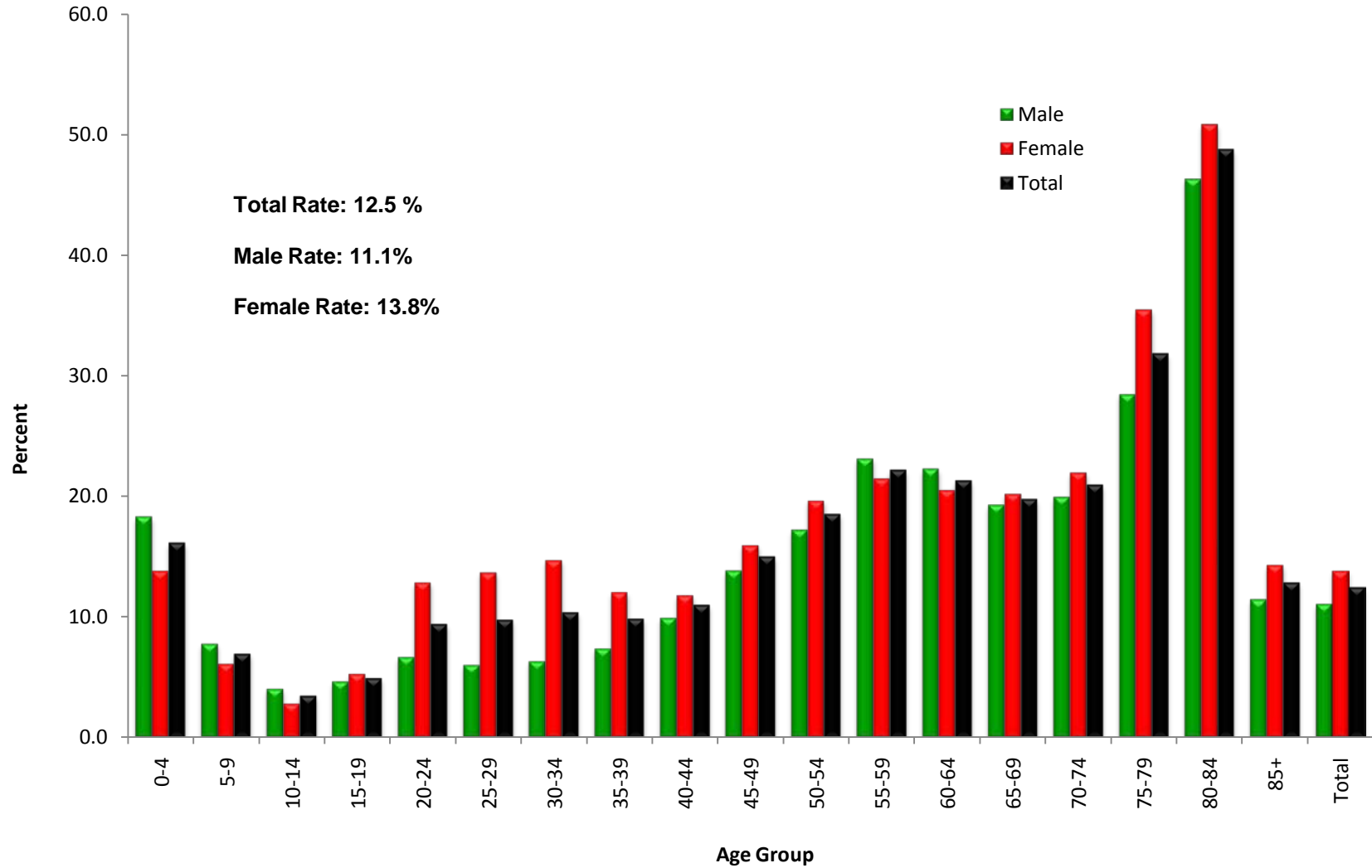
Graph C.7: MOPH Subsidized Admissions By ICD10 Categories of Diagnosis, 2012 (N=267,568)



Graph C.8: MOPH Subsidized Admissions by Category of Diagnosis and Gender, 2012 (N=267,568)

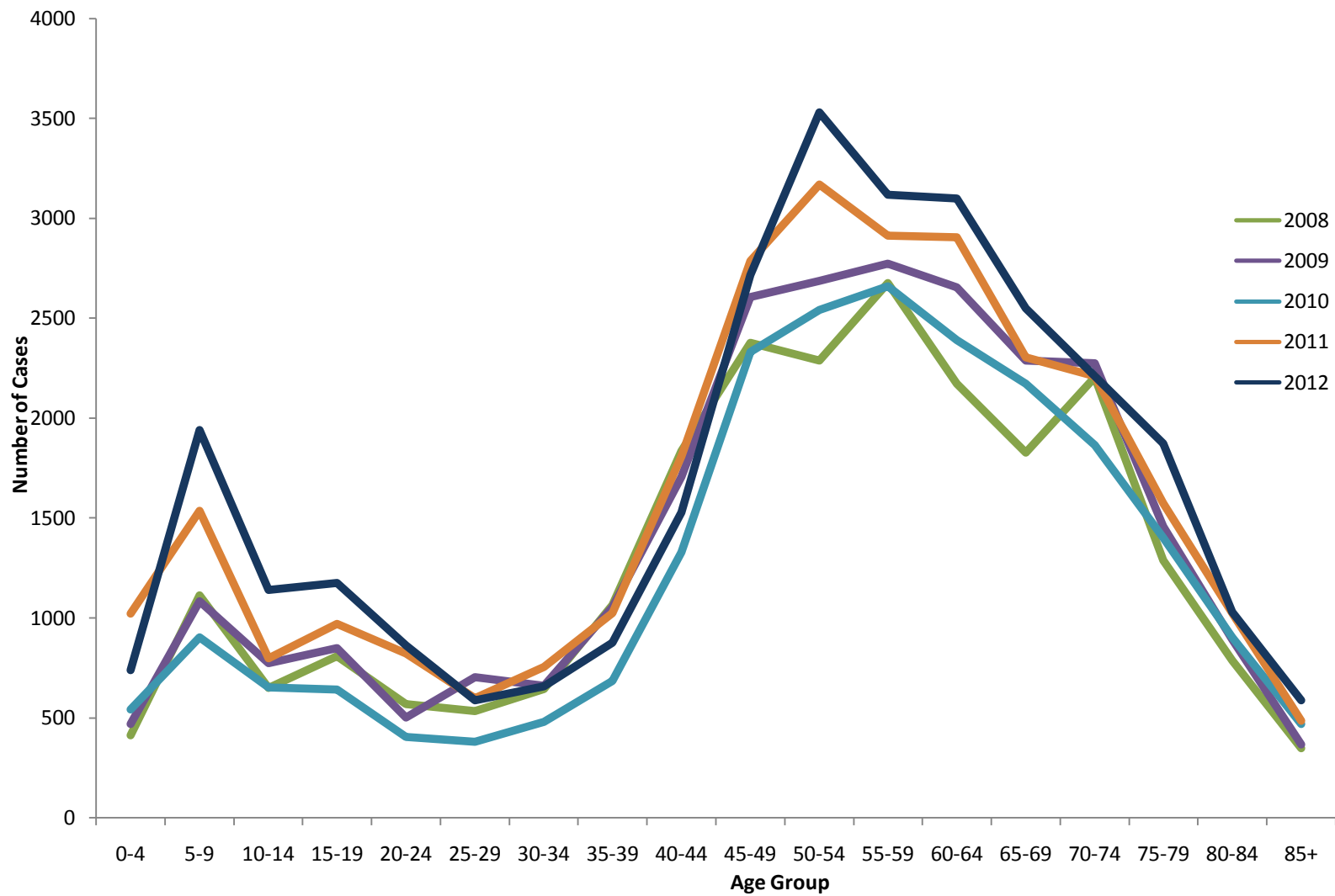


Graph C.9: Hospitalized Morbidities Among Eligible Population By Age Group and Gender, 2012

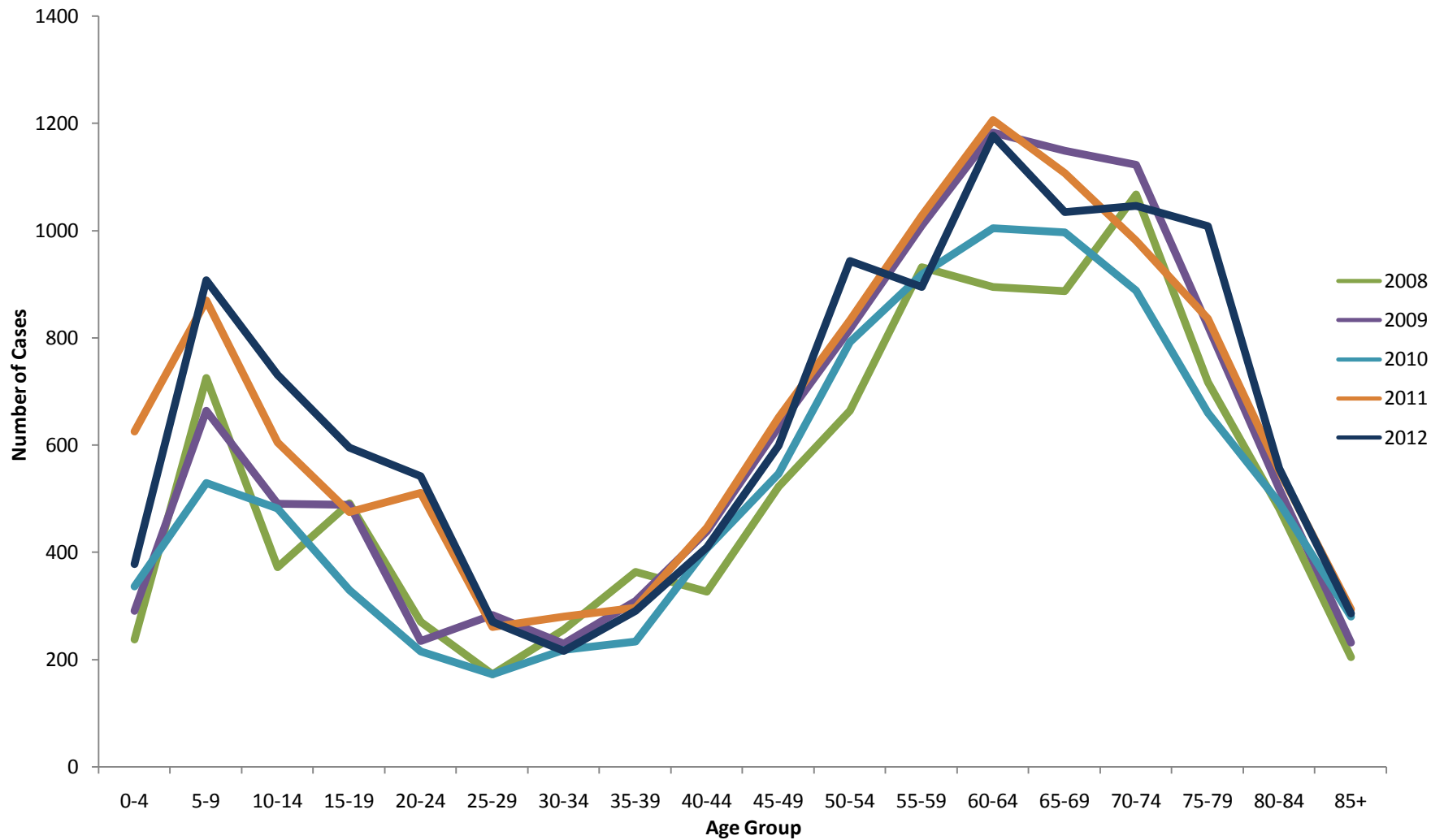


**Eligible population refers to those who are not covered by any public fund as per latest household survey.*

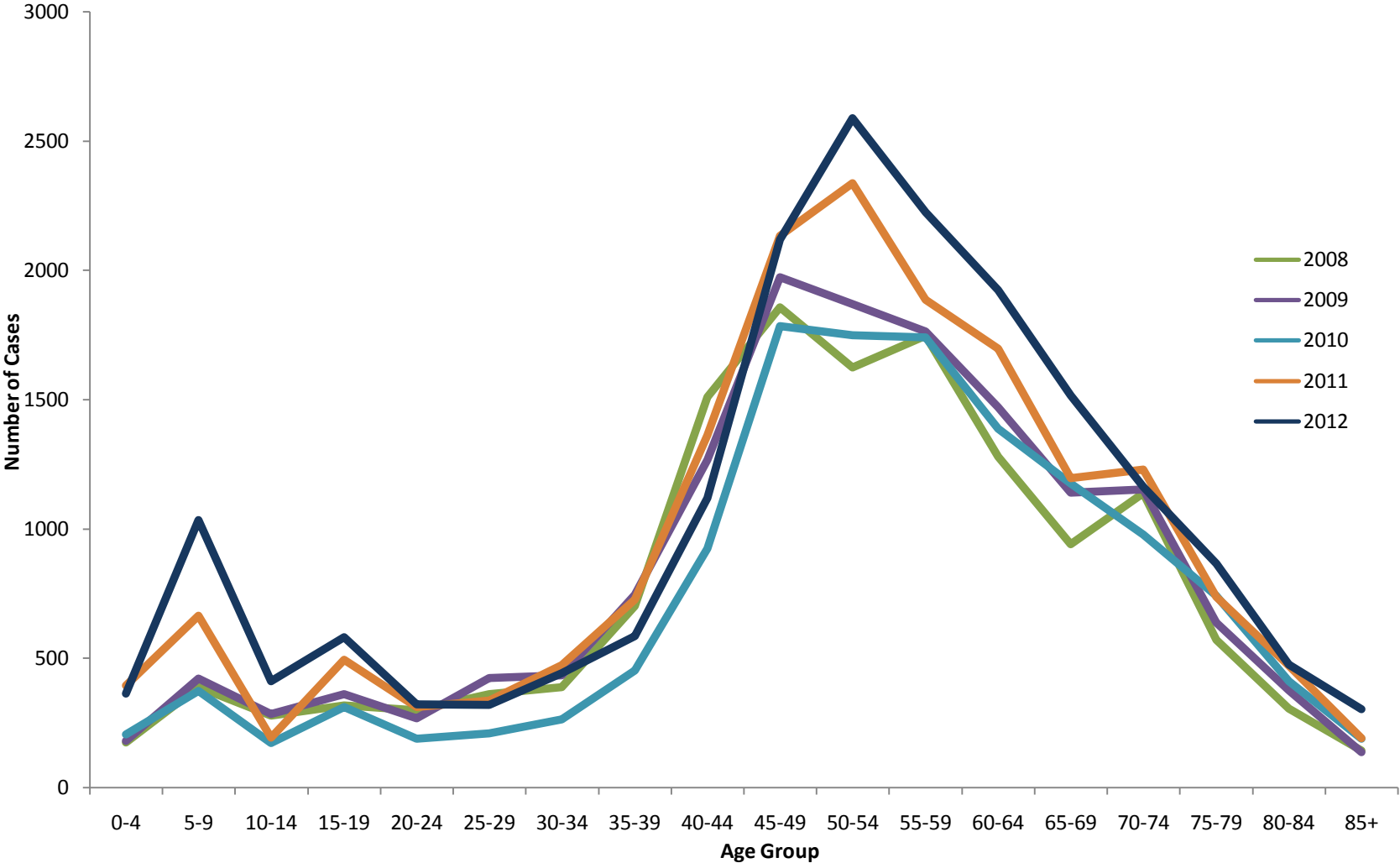
Graph D.1: Trend in MOPH Subsidized Hospitalized Cases of Neoplasms by Age Group, 2008-2012



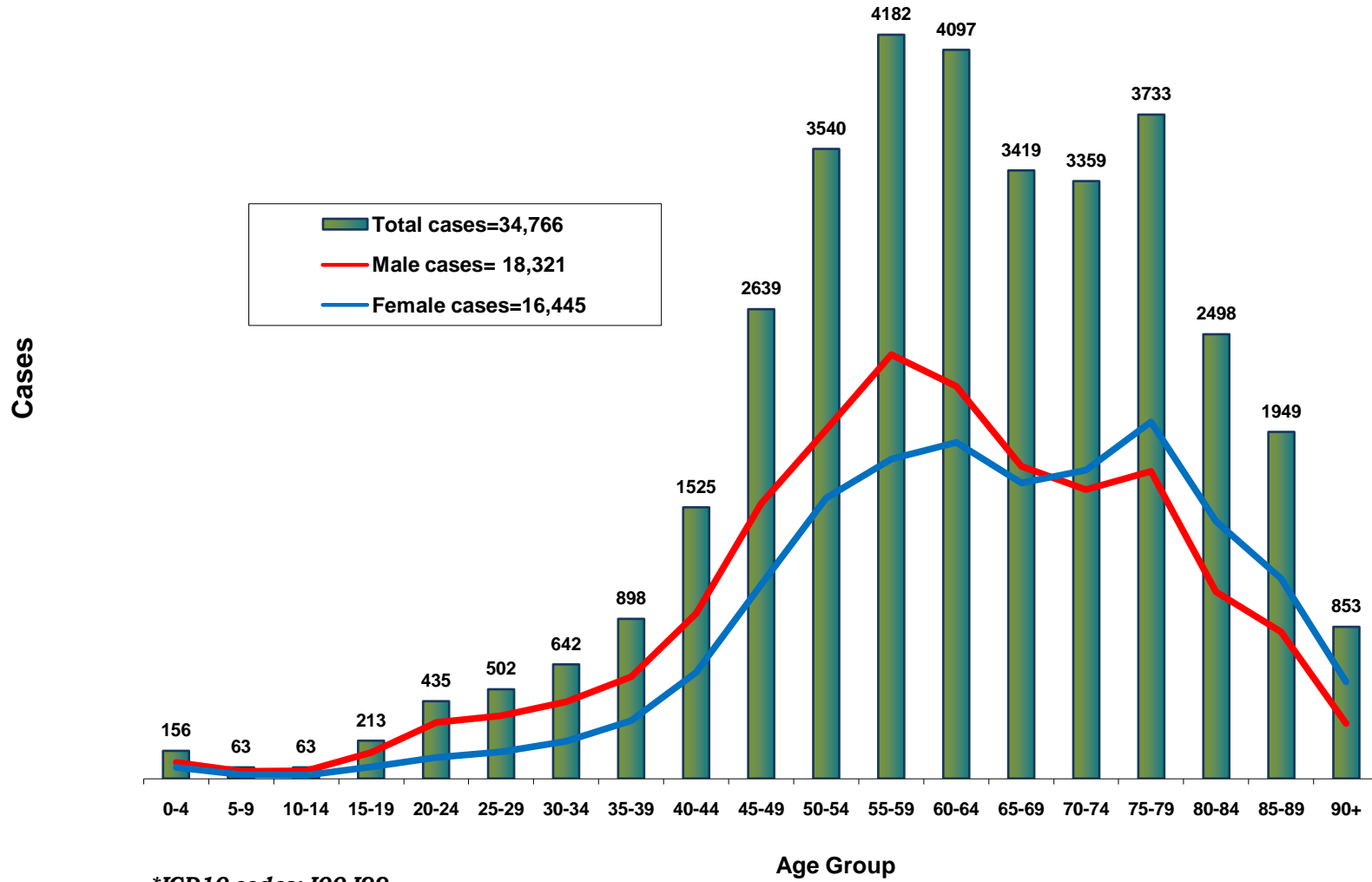
Graph D.2: Trend in MOPH Subsidized Hospitalized Male Cases of Neoplasms by Age Group, 2008-2012



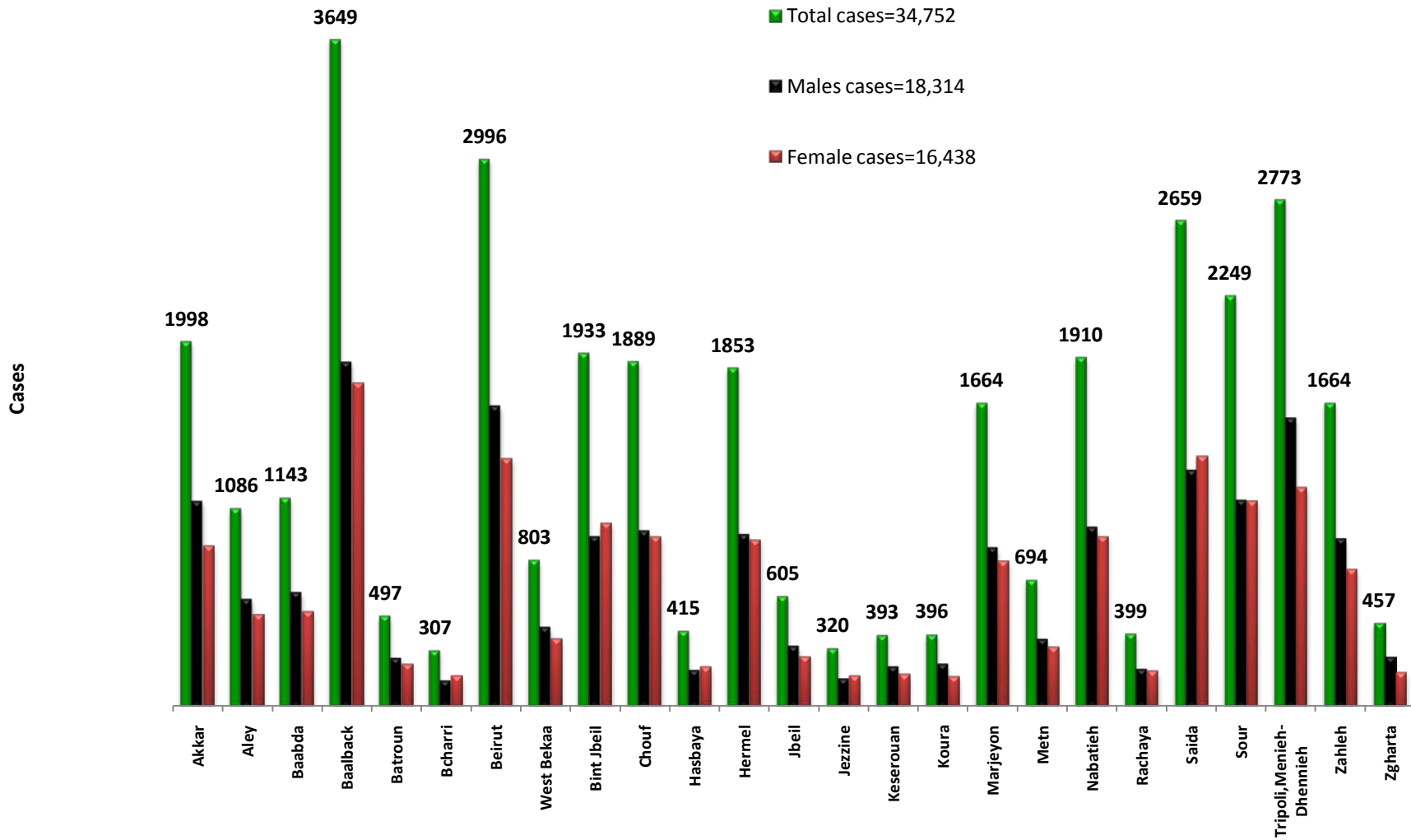
Graph D.3: Trend in MOPH Subsidized Hospitalized Female Cases of Neoplasms by Age Group, 2008-2012



Graph D.4: MOPH Subsidized Hospitalized Cardiovascular* Cases by Gender and Age Group, 2012



Graph D.5: MOPH Subsidized Hospitalized Cardiovascular Cases By Gender and Qada, 2012



*ICD10 codes: I00-I99

Graph D.6: MOPH Subsidized Open Heart Surgeries By Category, 2012 (N=3481)

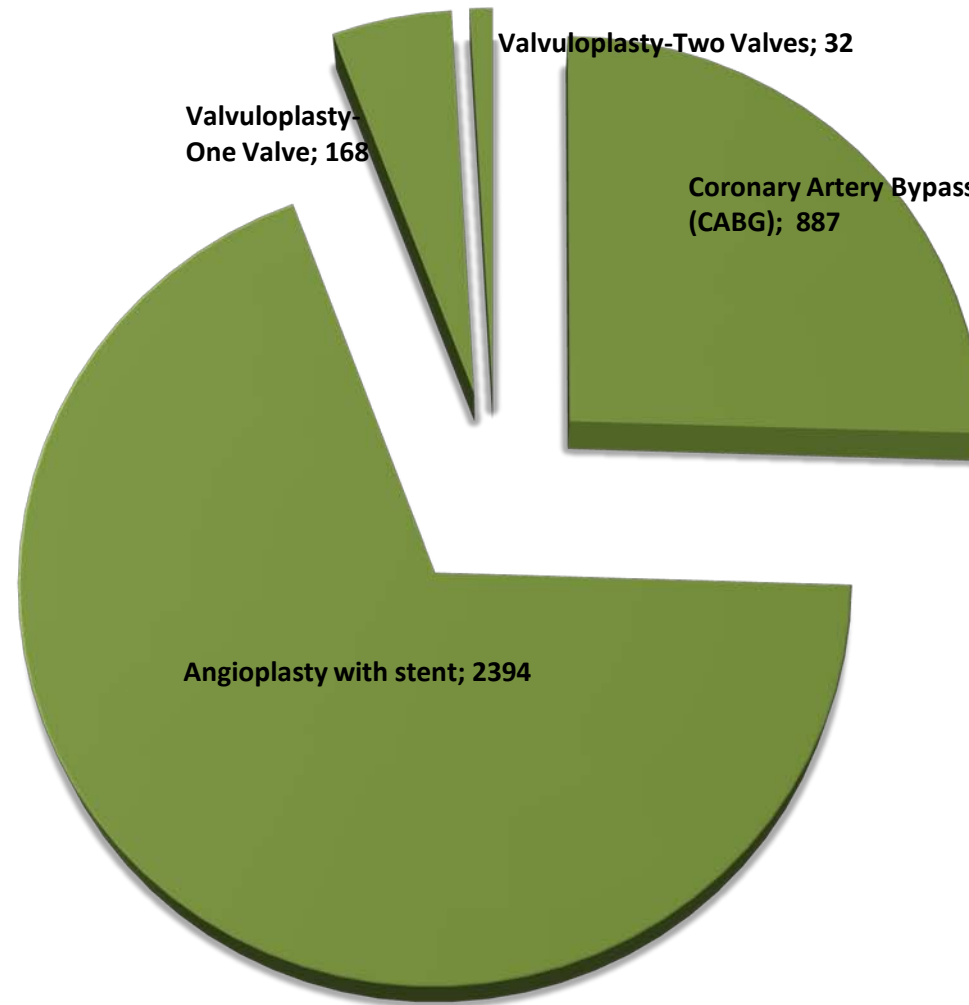


Table D.1: HIV/AIDS in Lebanon, 2012

Number of new reported cases in 2012: 97	
Number of cumulative cases till November 2012: 1552	
n (%)	
Stage of the Disease	
HIV	50 (51.5)
AIDS	33 (34)
Not specified	14 (14)
Gender	
Males	92 (94.8)
Females	8 (5.2)
Age Group	
≤ 30	27 (27.8)
31-50	30 (30.9)
> 50	3 (3.1)
Not specified	37 (38.1)
Mode of Transmission	
Sexual	54 (55.7)
Blood Transfusion	0 (0)
IDU	2 (2.1)
Perinatal	0 (0)
Not specified	41 (42.2)
Sexual Behavior	
Homosexual	42 (43.3)
Bisexual	0 (0)
Heterosexual	13 (13.4)
Not specified	42 (43.3)
Recent Travel History	
Yes	6 (6.2)
No	74 (76.3)
Not specified	17 (17.5)

Table E.1: National Immunization Coverage Rates for Polio by Qada*, 2012

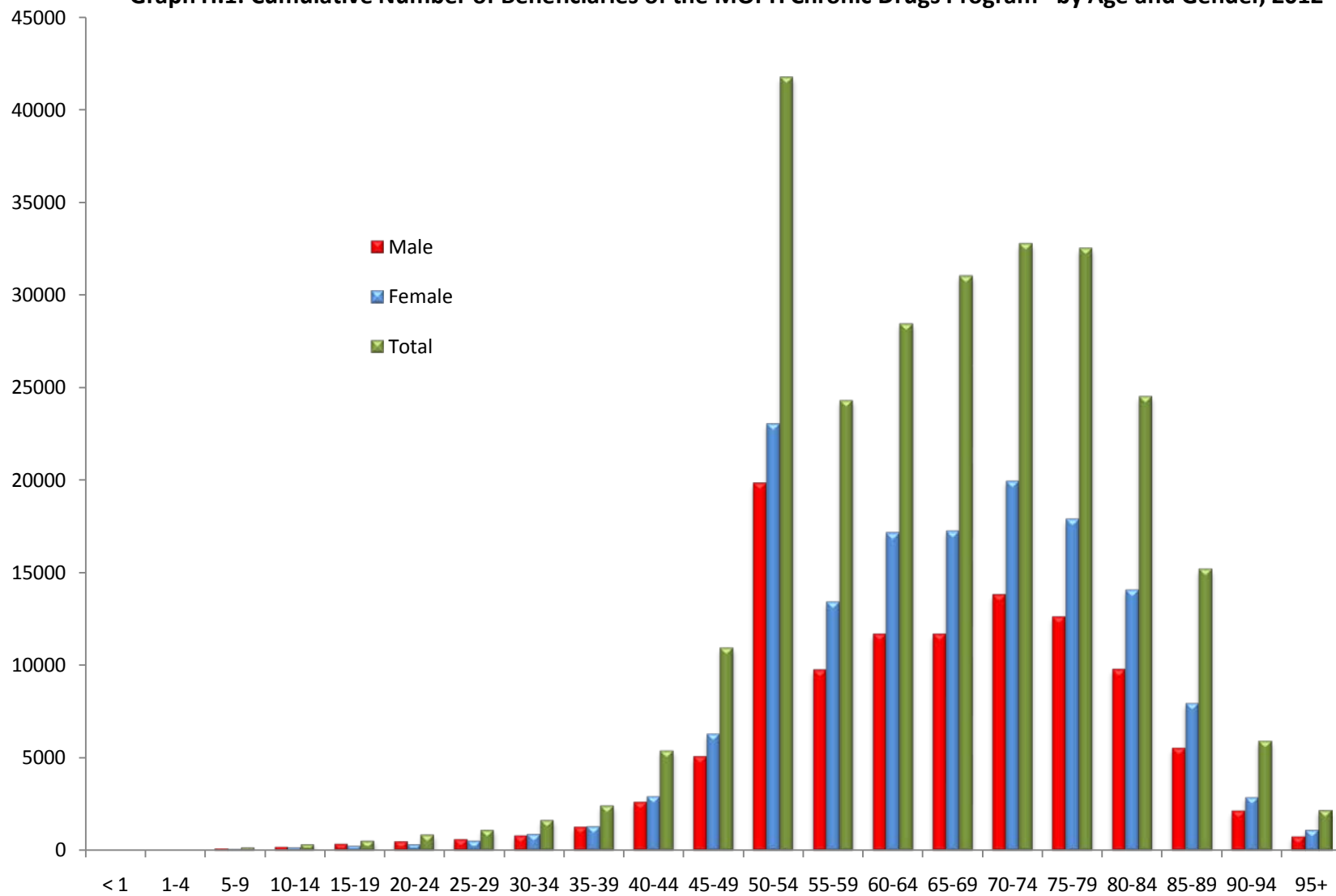
Qada	OPV3 %	القضاء
Batroun	91	البترون
West Bekaa	95	البقاع الغربي
Chouf	97	الشوف
Koura	95	الكورة
Metn	95	المتن
Nabatieh	92	النبطية
Hermel	92	الهرمل
Bcharri	91	بشري
Baabda	93	بعبدا
Baalback	92	بعلك
Bint Jbeil	92	بنت جبيل
Beirut	94	بيروت
Jbeil	91	جبيل
Jezzine	91	جزين
Hasbaya	92	حاصبيا
Rachaya	90	راشيا
Zahleh	94	زحلة
Zgharta	92	زغرتا
Sour	94	صور
Saida	93	صيدا
Minieh-Dhennieh	91	المنية الضنية
Tripoli	93	طرابلس
Aley	93	عاليه
Akkar	92	عكار
Keserouan	94	كسروان
Marjeyoun	91	مرجعيون
Total	96	المجموع

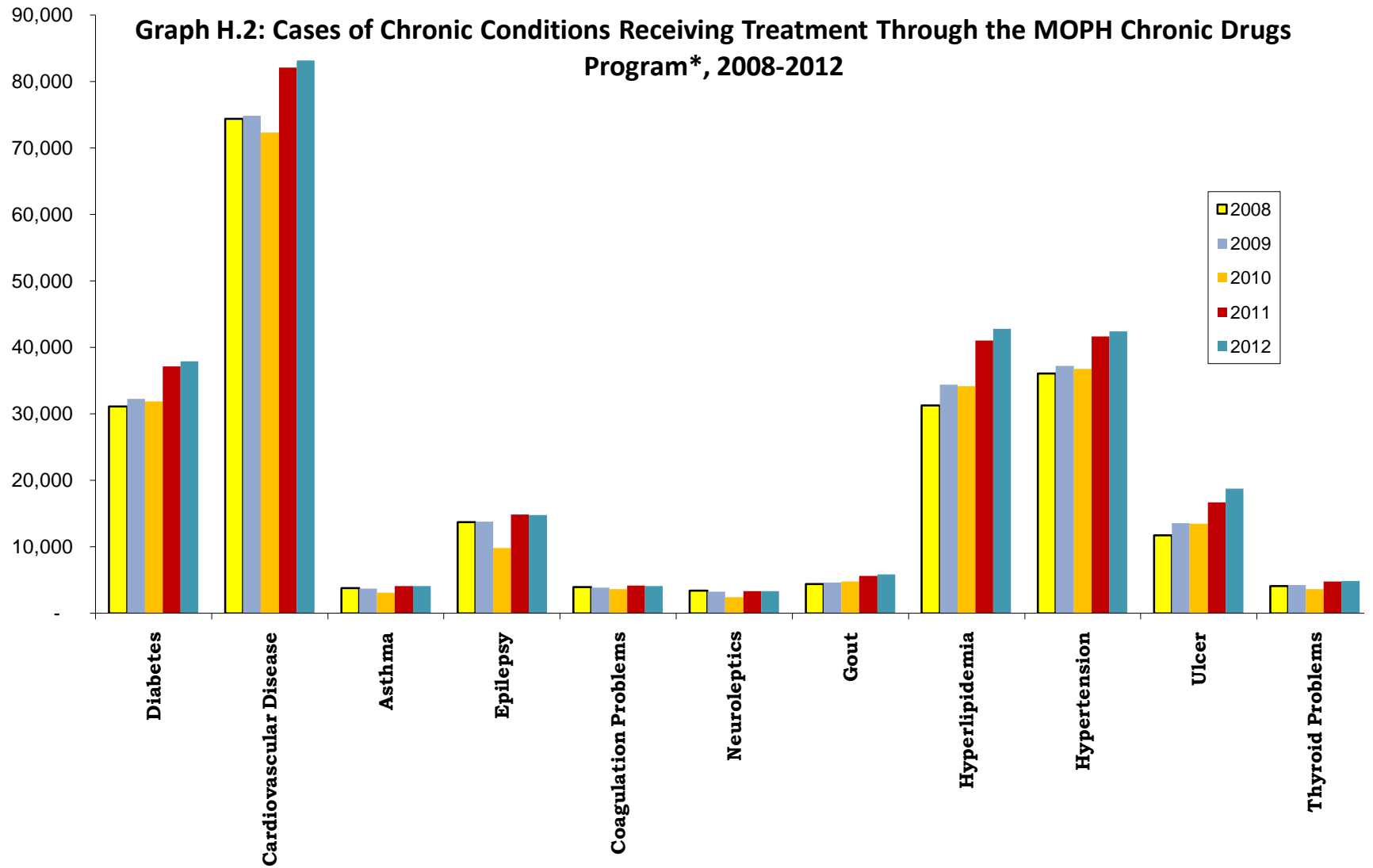
**Percentage of infants who have already received at least 3 doses of polio vaccine*

Table G.1: Maternal Neonatal Mortality Notification System (MNMNS) Statistics by Qada, 2012

							Deliveries		Maternal Deaths	Birth Weight		Neonatal Deaths	
	Live Births	Twin Births	Birth Defects	Still Births	Intra Uterine Fetal Deaths	Abortions	Normal Vaginal Deliveries	Caesarean Deliveries		<2500 g	>4000 g	First Week	Second Week
Akar	5371	75	90	7	80	523	3741	1560	2	364	167	29	6
Alay	590	6	0	2	6	66	323	262	0	25	14	1	0
AlBatroun	280	2	1	2	1	2	112	166	0	14	1	1	0
AlBikaa-AlGharbi	409	4	0	0	6	42	198	207	1	11	11	0	0
AlHermel	1439	22	1	4	14	222	359	1061	0	68	8	2	0
AlKoura	1544	42	8	0	12	124	806	691	0	110	47	8	2
AlMaten	6030	177	18	16	39	462	2555	3247	1	570	131	22	2
AlMenye-Aldoniyeh	993	3	4	3	12	171	736	255	0	32	27	0	0
AlNabatieh	2690	47	13	1	21	259	1091	1553	0	139	63	9	2
AlShouf	1665	26	4	0	32	274	880	760	0	125	52	5	1
Baabda	12934	286	84	6	162	1585	6876	5774	0	960	319	52	8
Baalbak	3784	66	23	6	47	461	1425	2299	1	292	52	22	0
Beirut	9129	330	66	14	95	1070	4672	4123	1	807	201	24	8
Bent Jbeil	658	2	3	1	7	108	349	308	0	26	28	0	0
Bshari	33	0	2	0	3	4	23	10	0	0	0	0	0
Hasbaya	97	1	0	0	2	30	43	55	0	7	1	0	0
Jbeil	1535	62	20	1	22	115	697	776	0	179	30	15	0
Jezzine	0	0	0	0	0	0	0	0	0	0	0	0	0
Keserwen	1360	27	12	1	7	207	549	786	1	121	29	1	1
Marje3youn	633	4	3	1	7	92	308	322	0	28	13	0	0
Rashaia	260	3	0	0	4	50	142	116	0	11	2	0	0
Saida	6359	148	43	2	59	879	3131	3106	1	550	162	56	6
Sour	3041	51	16	1	32	460	1668	1328	0	214	128	18	3
Tripoli	10109	127	66	8	100	1145	6327	3657	3	529	336	27	10
Zahle	6823	131	44	10	85	569	2912	3783	3	550	176	37	4
Zgharta	1839	41	7	6	47	122	876	920	0	225	26	0	0
Grand Total	79605	1683	528	92	902	9042	40799	37125	14	5957	2024	329	53

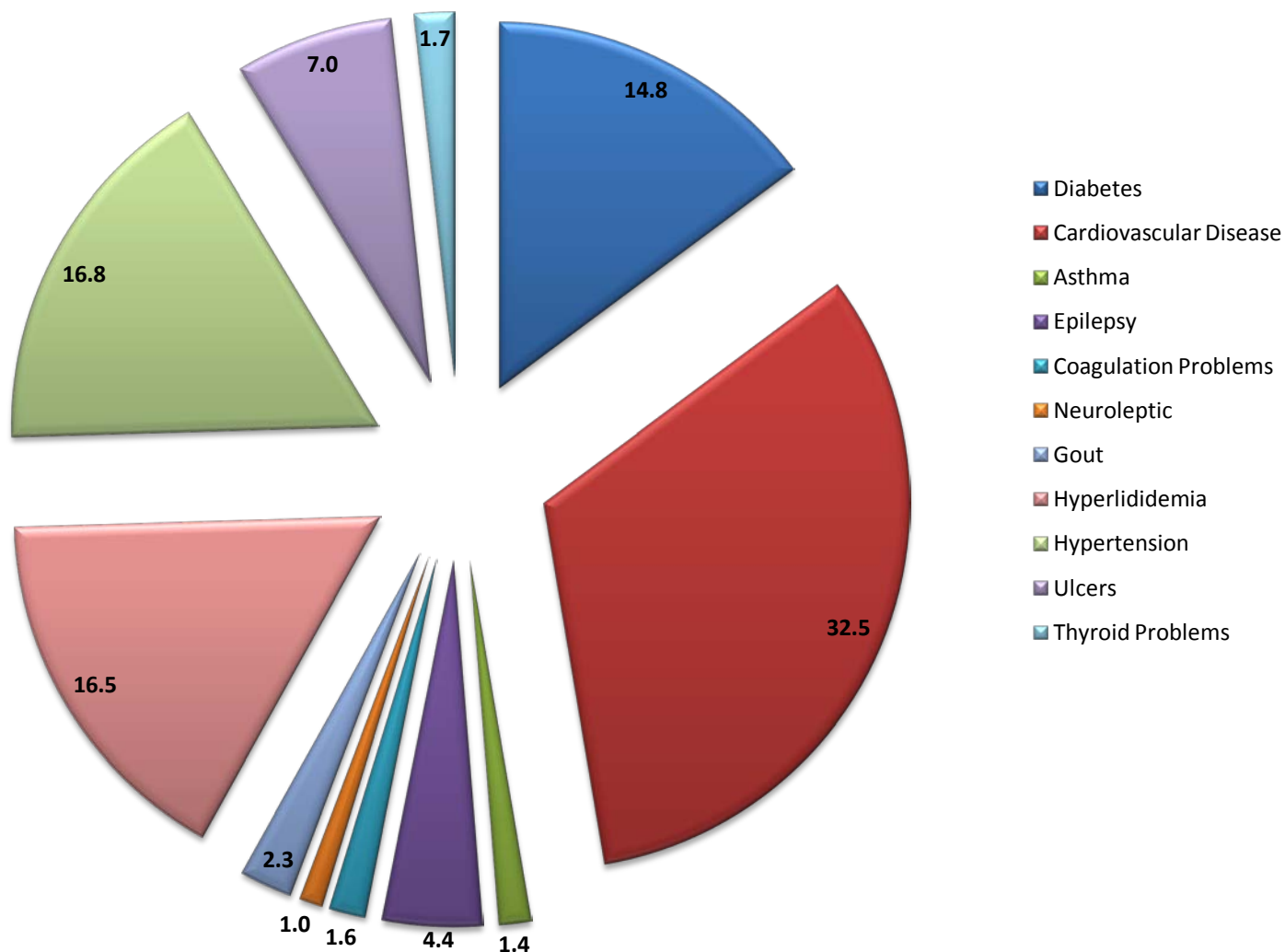
Graph H.1: Cumulative Number of Beneficiaries of the MOPH Chronic Drugs Program* by Age and Gender, 2012





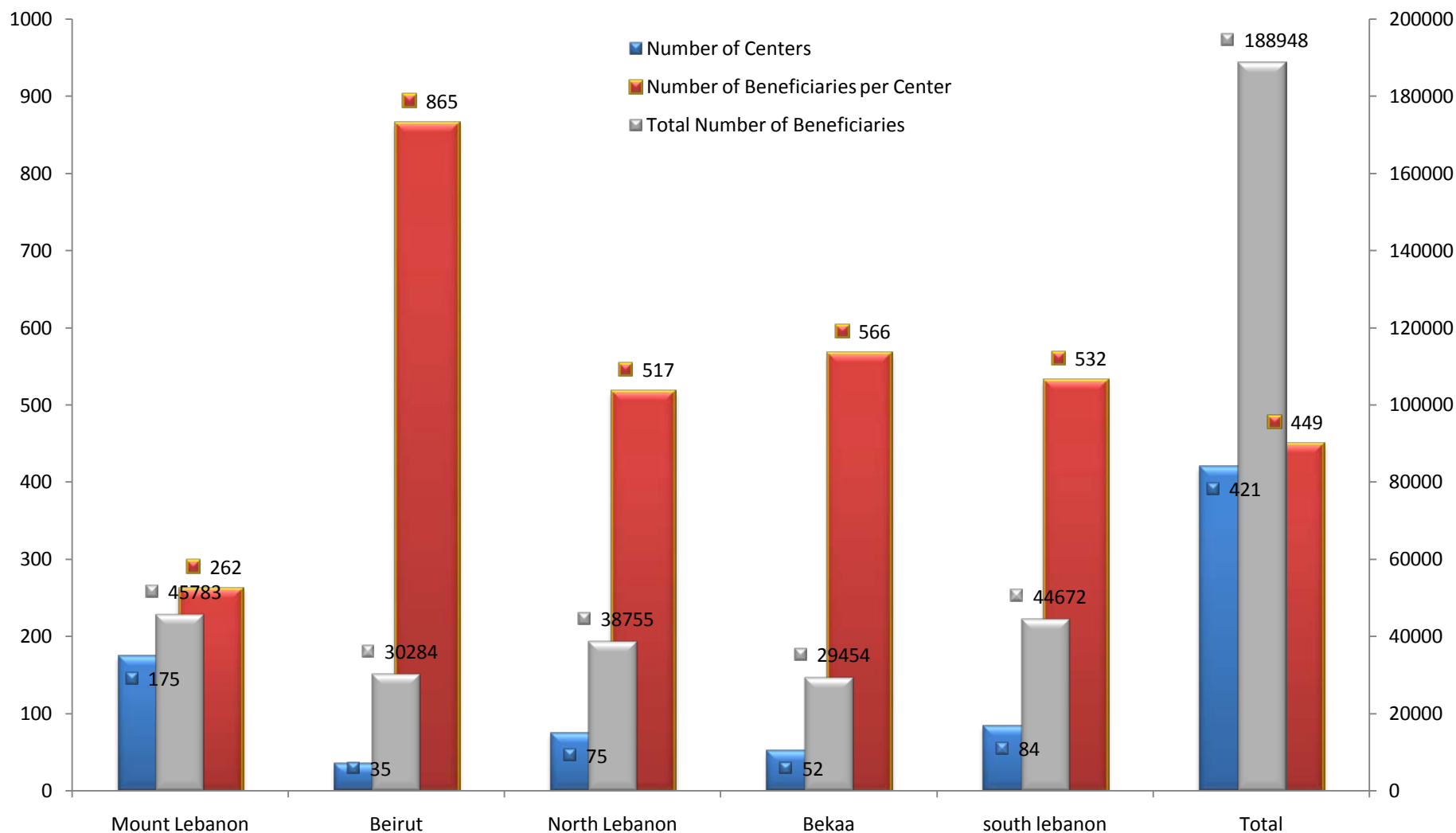
**Source: YMCA, an NGO on contract with the MOPH for delivery of chronic drugs to PHC centers*

Graph H.3: Distribution of Chronic Conditions Among Users of Chronic Drugs *, 2012



**Source: YMCA, an NGO on contract with the MOPH for delivery of chronic drugs to PHC centers*

Graph H.4: Socio-medical Centers and Beneficiaries per Center by Mohafaza, 2012*



*Source: YMCA, an NGO on contract with the MOPH for delivery of chronic drugs to PHC centers.