

## GENERAL PROFILE: LEBANON

### GENERAL INFORMATION FOR 2021

**Population**  
5.593 Millions

**Exchange rate**  
1 507.500 LBP/US\$

**GDP**  
-

**Land area<sup>1</sup>**  
(q) 10 230 km<sup>2</sup>

**CPI growth**  
154.76 %

**GDP growth**  
-15.14 %

### INTERNATIONAL MERCHANDISE TRADE

#### Total merchandise trade

(millions of US\$)

	2005	2010	2015	2021
Merchandise exports	2 337	5 021	3 982	4 590
Merchandise imports	9 633	18 460	18 965	13 857
Merchandise trade balance	-7 296	-13 439	-14 984	-9 267

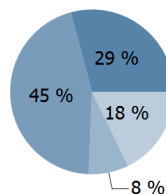
**+12.4 %**

Merchandise exports growth rate in 2021

#### Export structure by product group in 2021

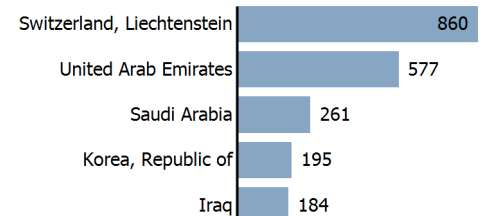
(as % of total exports)

- All food items
- Ores and metals
- Manufactured goods
- Other



#### Top 5 partners in 2021

(exports, millions of US\$)



### INTERNATIONAL TRADE IN SERVICES

#### Total trade in services<sup>2</sup>

(millions of US\$)

	2005	2010	2015	2021
Services exports	10 864	16 040	15 910	-
Services imports	7 890	(e) 13 179	(e) 13 693	-
Services trade balance	2 974	(e) 2 861	(e) 2 217	-

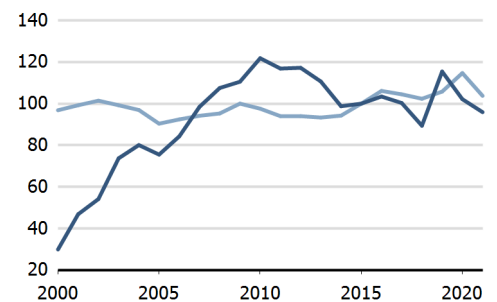
#### Services exports by main category<sup>2</sup>

(as % of total services)

	2005	2010	2015	2021
Transport	4.0	4.1	9.1	-
Travel	50.9	49.0	43.1	-
Other services	45.0	46.1	47.3	-

### TRADE INDICES

- Terms of trade index
- Purchasing power index of exports



### ECONOMIC TRENDS

#### Economic indicators

(millions of US\$ unless otherwise specified)

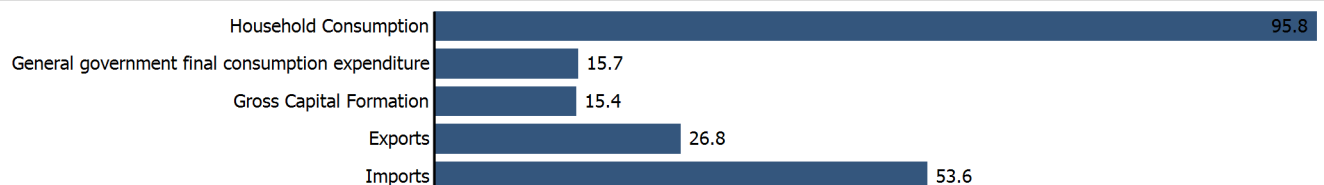
	2005	2010	2015	2021
GDP, current	21 497	38 444	50 066	-
GDP per capita, current US\$	4 630	7 695	7 824	-
Real GDP growth, y-on-y, %	2.69	7.98	0.58	-15.14
Current account balance, % of GDP	-12.78	-19.64	-17.06	(e) -7.61
Exchange rate (/US\$)	1 507.500	1 507.500	1 507.500	1 507.500

**-15.1 %**

Gross domestic product growth rate in 2021

#### GDP by expenditure in 2020

(as % of total GDP)



# LEBANON

## FDI AND EXTERNAL FINANCIAL RESOURCES

### Financial flows

(millions of US\$ unless otherwise specified)

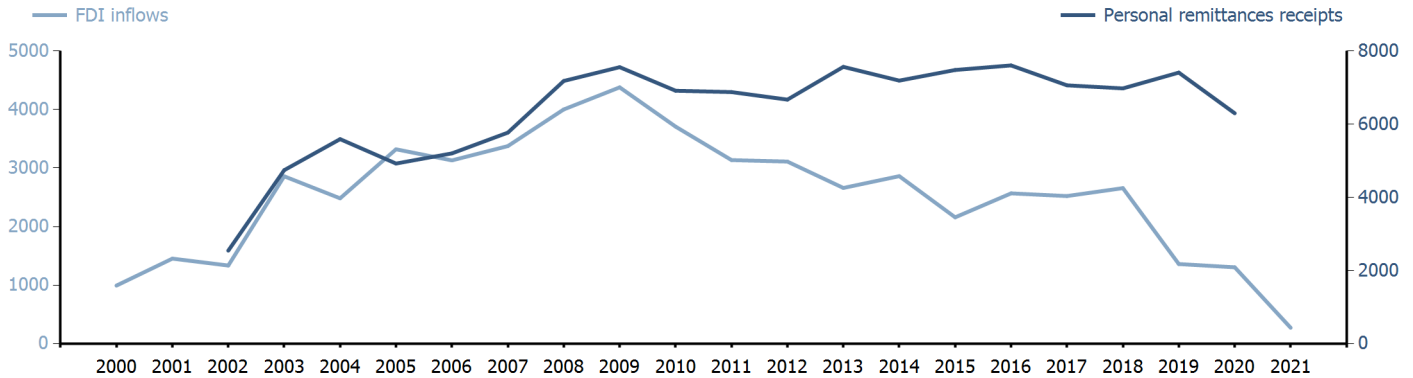
	2005	2010	2015	2021
FDI inflows	3 321.49	3 708.38	2 159.29	273.06
FDI outflows	715.50	486.83	660.21	65.50
Personal remittances, % of GDP	22.91	17.98	14.98	..

**+0.1 %**

FDI outflows as % of GDP in 2021

### Financial flows trends

(millions of US\$)



## TRADE IN GOODS AND SERVICES

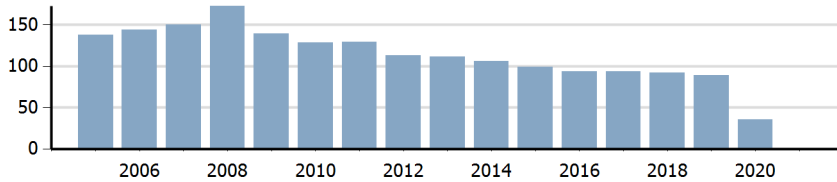
### Trade balance indicators<sup>2</sup>

(as % and index)

	2005	2010	2015	2021
Balance, % of GDP	-15.86	(e) -25.14	(e) -22.31	-
Balance, % of imports	-20.65	(e) -32.70	(e) -36.75	-
Normalized balance	-0.115	(e) -0.195	(e) -0.225	-

### Trade openness<sup>2</sup>

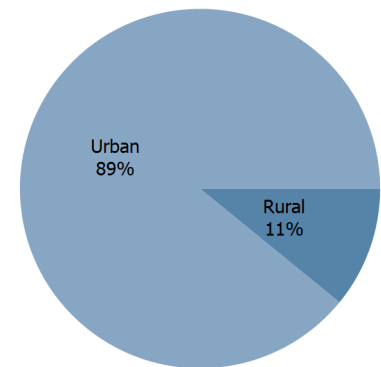
(sum of imports and exports as % of GDP)



## LIVING AREA

### Population by living area in 2021

(% of population)



## OTHER INDICATORS

### Maritime transport indicators

	2005	2010	2015	2021
Merchant fleet, national flag (thousands of DWT)	238	159	170	182
Liner shipping connectivity index (maximum 2006 = 100 for China)	..	26.33	36.48	43.15
Container port throughput (TEU)	..	949 000	1 130 000	..

**0.009 %**

Share of the total world merchant fleet in 2021

### Information economy indicators

(as % of)

	2005	2010	2015	2021
Share of ICT goods, % of total exports	1.84	7.11	0.82	0.55
Share of ICT goods, % of total imports	3.26	2.79	2.25	3.04
Share of workforce involved in the ICT sector	..	..	..	..

# LEBANON

Source: UNCTADstat (<http://unctadstat.unctad.org>)

## Notes:

- 1 Land area refers to the total area of a country excluding area under inland water bodies. It differs from the country area, that includes area under inland water bodies, but excludes offshore territorial waters.
- 2 Statistics presented correspond to the 6th edition of the IMF Balance of Payments and International Investment Position Manual (BPM6, 2009).
- e Estimated.
- q Estimated. Data refers to 2020.

## Symbols for missing values:

- 0 Zero means that the amount is nil or negligible
- .. Not available or not separately reported
- Not applicable
- ... Not available, including no quotation
- # Non-relevant calculation
- Not publishable
- \*\*\* Negative accumulation of flows; Value included in regional and global totals

## Abbreviations & acronyms:

- DWT: Dead weight tons
- FDI: Foreign direct investment
- GDP: Gross domestic product
- ICT: Information and communication technology
- TEU: Twenty foot equivalent unit
- US\$: United States dollar

## Disclaimer:

The designations employed and the presentation of the material on UNCTADstat do not imply the expression of any opinion whatsoever on the part of the secretariat of the United Nations concerning the legal status of any country, territory, city or area, or of its authorities, or concerning the delimitation of its frontiers or boundaries.

Where the designations "economy" or "country or area" appear in texts or tables, they cover regions, countries, territories, cities or areas.

UNCTAD strives for the highest level of accuracy and is committed to promptly correcting any errors on its part. It does not guarantee or make any express or implied representations regarding the accuracy, reliability, correctness, fitness for use for a particular purpose, or otherwise, whatsoever, of any of the tables in UNCTADstat.

Generation date: 20 October 2022